



EXPERIENCE  
YOUR  
AMERICA

# NPS National Datasets

Information Resources Management

Seshu Vaddey, Chief of RISD



# Because we are



EXPERIENCE  
YOUR  
AMERICA

**417 Park Units**

**Spread across 7  
regions**

**w/ National Programs**

- **Natural Resource Stewardship & Sciences**
- **Cultural Resources**
- **Planning, Facilities & lands**
- **Interpretation, Education & Volunteers**
- **Visitor & Resources Protection**
- **Partnerships & Civic Engagement**

# Solution



- Develop out
  - IT Infrastructure
  - Business Processes and Policies

*To develop and maintain  
National Datasets*

- For Third Party App developers
- For The USGS National Map
- For the public

EXPERIENCE  
YOUR  
AMERICA

# The Plan



EXPERIENCE  
YOUR  
AMERICA

- **Parks**
  - Park A
  - Park B
  - Park C
  - ...
- **Regions**
  - Region 1
  - Region 2
  - Region 3
  - ...
- **National Datasets**

# USGS National Map as a Test Case



## Build up

- Infrastructure
- Data Standards
- Business Processes and Workflows

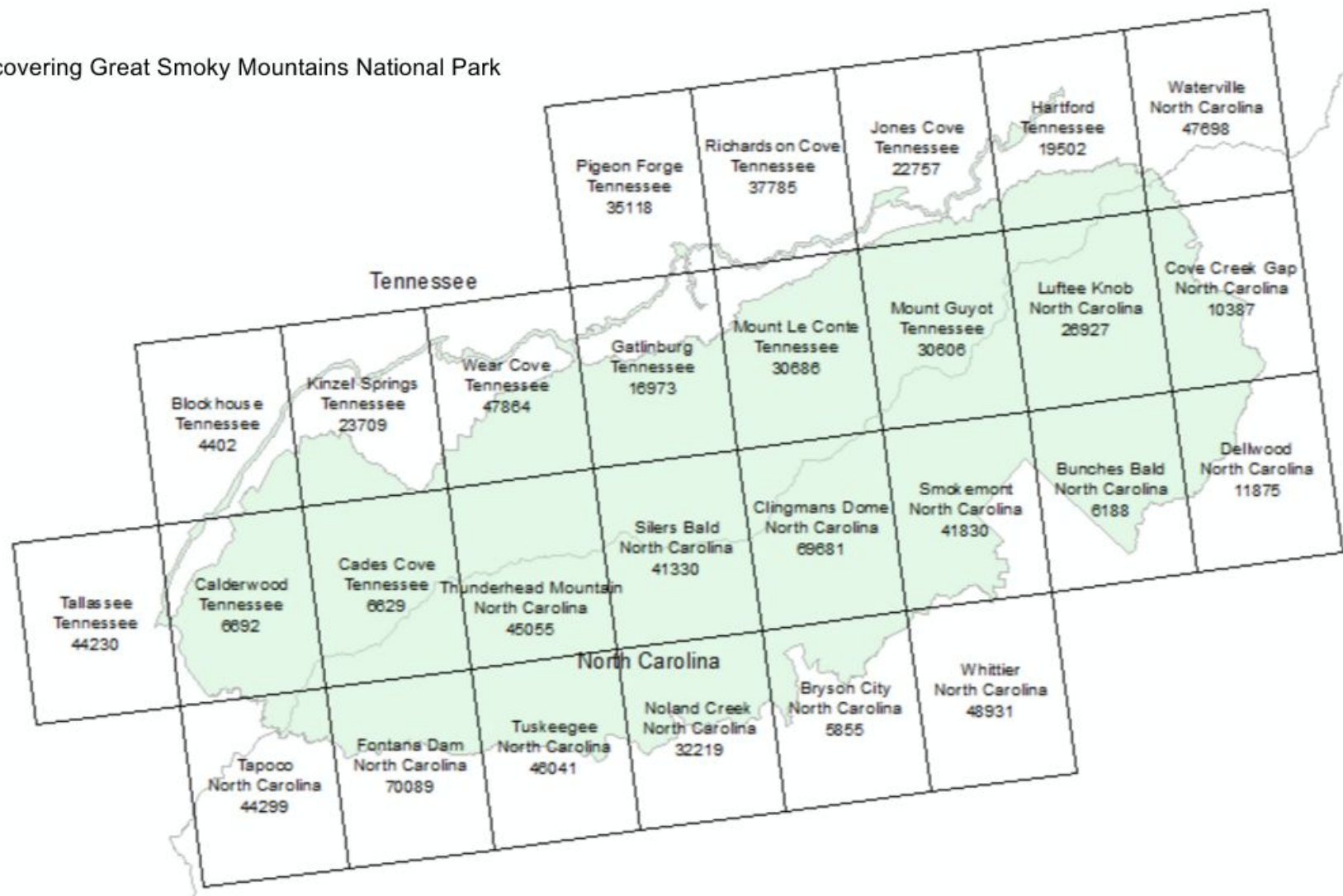
*Great Smokey Mountains NP was the first Pilot*

EXPERIENCE  
YOUR  
AMERICA

# USGS Topo of Great Smokey Mountains NP

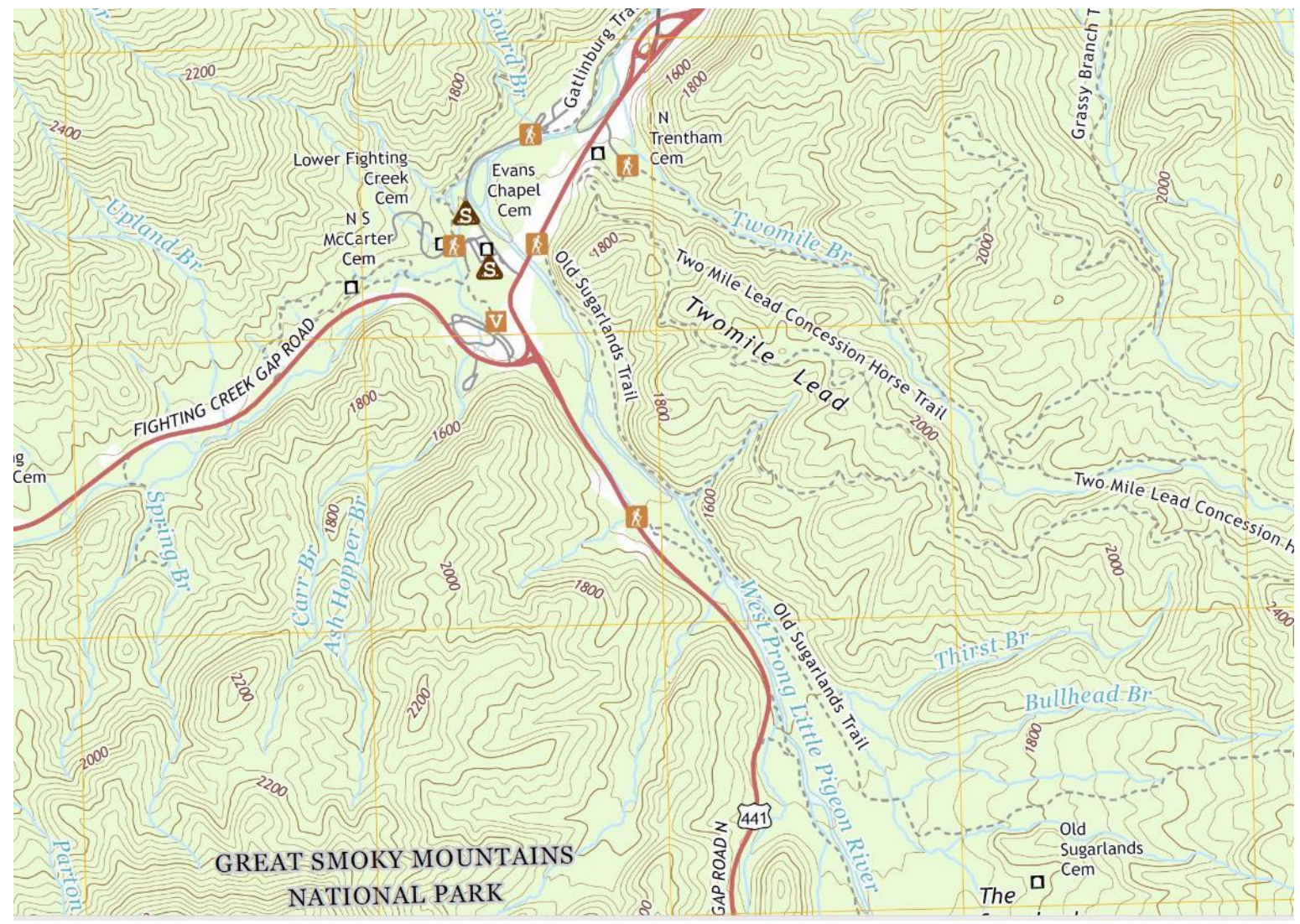


7.5-minute cells covering Great Smoky Mountains National Park



EXPERIENCE  
YOUR  
AMERICA

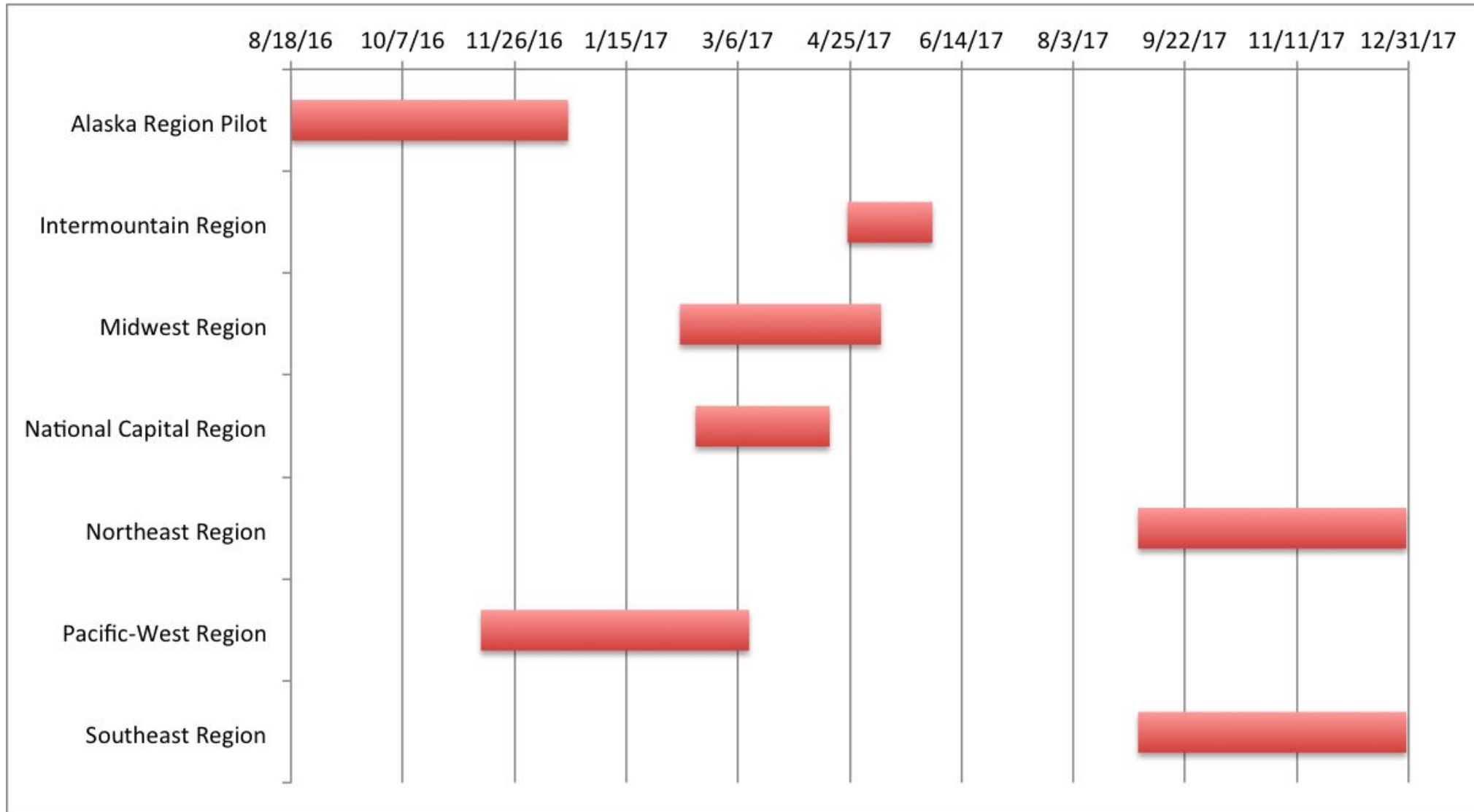
# USGS Topo of Great Smokey Mountains NP



EXPERIENCE  
YOUR  
AMERICA

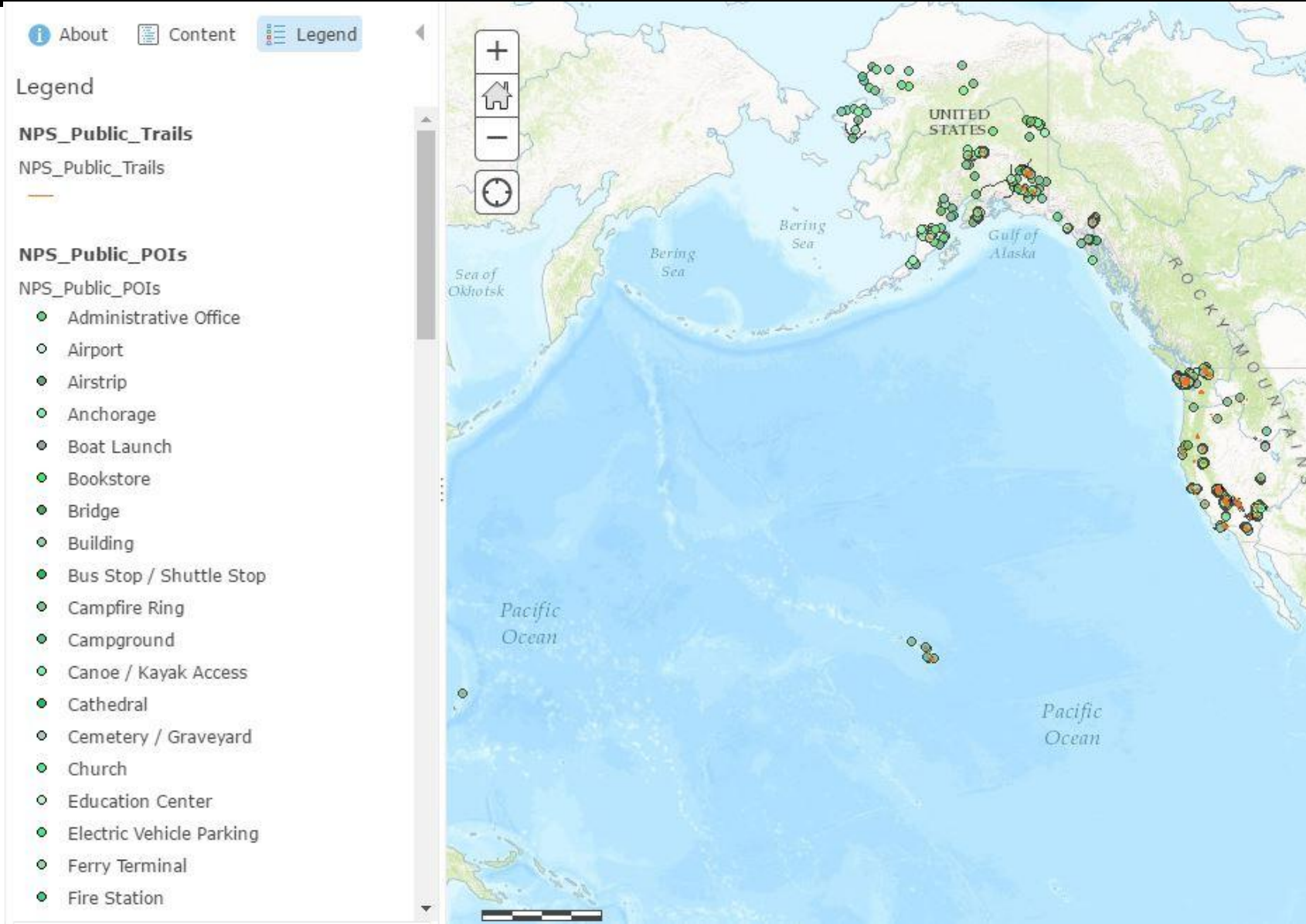


# Moving to build up our datasets Regionally



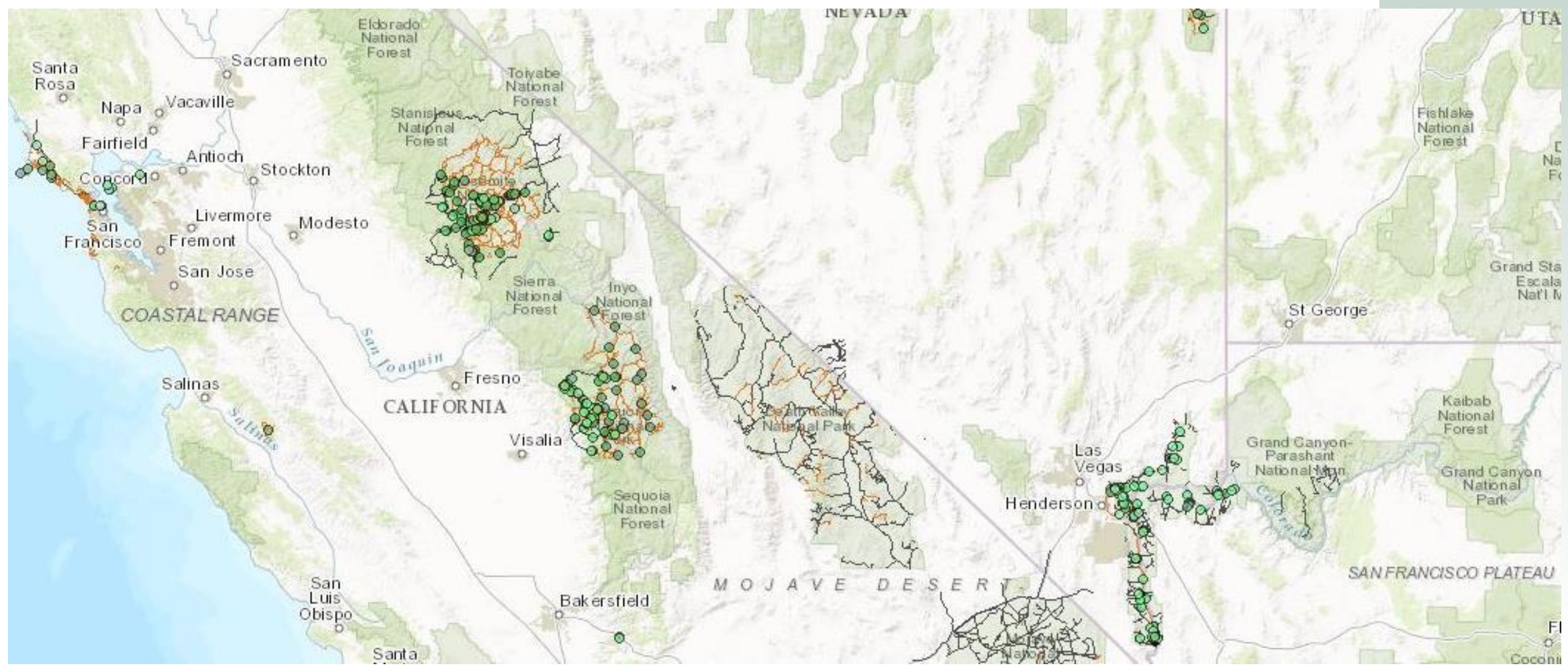
EXPERIENCE  
YOUR  
AMERICA

# Alaska and Pacific West Regions



EXPERIENCE  
YOUR  
AMERICA

# Pacific West Region closeup



# Internal NPS Mapservices



## NPS National Geospatial Program Data Services Directory

[Home](#) > [services](#)

[JSON](#) | [SOAP](#)

Folder: /

Folders:

- [AML](#)
- [Buildings](#)
- [ElevationProject](#)
- [NPSNavigator2](#)
- [Services](#)
- [System](#)
- [Testing](#)
- [Utilities](#)
- [Wilderness](#)
- [WildlandFire](#)

Services:

- [Access\\_Line \(MapServer\)](#)
- [CAHA\\_Birds \(FeatureServer\)](#)
- [CAHA\\_Birds \(MapServer\)](#)
- [CivilWarBattleFields \(MapServer\)](#)
- [CongDists \(MapServer\)](#)
- [DOI\\_NationalTrails \(MapServer\)](#)
- [FederalLandsToParks \(FeatureServer\)](#)
- [FederalLandsToParks \(MapServer\)](#)
- [MaintainedLandscapes \(MapServer\)](#)
- [NPSNationalTrails \(MapServer\)](#)
- [NPSRegions \(MapServer\)](#)
- [NPSUnits \(MapServer\)](#)
- [ParkTrails \(MapServer\)](#)
- [PointsofInterest \(MapServer\)](#)
- [USCounties2000 \(MapServer\)](#)
- [USGSQuads \(MapServer\)](#)
- [WildandScenicRivers \(MapServer\)](#)



Supported Interfaces: [REST](#) [SOAP](#) [Sitemap](#) [Geo Sitemap](#)

EXPERIENCE  
YOUR  
AMERICA

# Internal National Dataset Services



EXPERIENCE  
YOUR  
AMERICA

## NPS National Geospatial Program Data Services Directory

[Home](#) > [services](#) > [Testing](#)

[JSON](#) | [SOAP](#)

### Folder: Testing

#### Services:

- [Testing/NPS\\_Internal\\_POIs\\_GCS\\_NAD83 \(FeatureServer\)](#)
- [Testing/NPS\\_Internal\\_POIs\\_GCS\\_NAD83 \(MapServer\)](#)
- [Testing/NPS\\_Internal\\_POIs \(FeatureServer\)](#)
- [Testing/NPS\\_Internal\\_POIs \(MapServer\)](#)
- [Testing/NPS\\_Internal\\_Roads\\_GCS\\_NAD83 \(FeatureServer\)](#)
- [Testing/NPS\\_Internal\\_Roads\\_GCS\\_NAD83 \(MapServer\)](#)
- [Testing/NPS\\_Internal\\_Roads \(FeatureServer\)](#)
- [Testing/NPS\\_Internal\\_Roads \(MapServer\)](#)
- [Testing/NPS\\_Internal\\_Trails\\_GCS\\_NAD83 \(FeatureServer\)](#)
- [Testing/NPS\\_Internal\\_Trails\\_GCS\\_NAD83 \(MapServer\)](#)
- [Testing/NPS\\_Internal\\_Trails \(FeatureServer\)](#)
- [Testing/NPS\\_Internal\\_Trails \(MapServer\)](#)
- [Testing/NPS\\_Public\\_POIs\\_GCS\\_NAD83 \(FeatureServer\)](#)
- [Testing/NPS\\_Public\\_POIs\\_GCS\\_NAD83 \(MapServer\)](#)
- [Testing/NPS\\_Public\\_POIs \(FeatureServer\)](#)
- [Testing/NPS\\_Public\\_POIs \(MapServer\)](#)
- [Testing/NPS\\_Public\\_Roads\\_GCS\\_NAD83 \(FeatureServer\)](#)
- [Testing/NPS\\_Public\\_Roads\\_GCS\\_NAD83 \(MapServer\)](#)
- [Testing/NPS\\_Public\\_Roads \(FeatureServer\)](#)
- [Testing/NPS\\_Public\\_Roads \(MapServer\)](#)
- [Testing/NPS\\_Public\\_Trails\\_GCS\\_NAD83 \(FeatureServer\)](#)
- [Testing/NPS\\_Public\\_Trails\\_GCS\\_NAD83 \(MapServer\)](#)
- [Testing/NPS\\_Public\\_Trails \(FeatureServer\)](#)
- [Testing/NPS\\_Public\\_Trails \(MapServer\)](#)

Supported Interfaces: [REST](#) [SOAP](#) [Sitemap](#) [Geo Sitemap](#)

# Feature and Map Services



## NPS National Geospatial Program Data Services Directory

[Home](#) > [services](#) > [Testing](#) > [NPS\\_Public\\_Trails\\_GCS\\_NAD83 \(FeatureServer\)](#)

[JSON](#) | [SOAP](#)

### Testing/NPS\_Public\_Trails\_GCS\_NAD83 (FeatureServer)

**View In:** [ArcGIS.com Map](#)

**View Footprint In:** [ArcGIS.com Map](#)

**Service Description:** This feature class contains lines representing formal and informal trails as well as routes within and across National Park Units. This dataset uses a set of core attributes designed by the NPS enterprise geospatial committee.

**Has Versioned Data:** false

**MaxRecordCount:** 30000

**Supported Query Formats:** JSON, AMF

#### Layers:

- [NPS\\_Public\\_Trails \(0\)](#)

#### Description:

**Copyright Text:** NPS, AKRO, K.Waterman(Kawerak Inc.), Noah Naylor(NW Arctic Borough), S.Georgette(USFWS-Selawik), B.Saito(ADFG-Kotzebue), C.Nayokpuk(Nayokpuk Services, Shishmaref), W.Guess,(NPS, Nome), M.Johnson(NPS,Kotzebue), J.Cusick, S. Devenney (NPS, GIS Team, Anchorage), URS(Anchorage), D.Kurtz, C. Kreidemann, Carson Odhner (NPS,Kenai Fjords), Jon Paynter, B. Schroeder, Steve Homan, Steve Carwile, A. Lindeman, C.Chiodo, A.Jirout,J.Zimmerman,A. Eddington (NPS, Denali NP&P), B. Mangipane, J.Branson, K.Sutton (NPS,Lake Clark NP&P), J.Wilbarger, A.Baldwin, Shawn Jones (NPS,Klondike NP), Parks Canada (Klondike), J.Scott, E.Guthrie, J.Baker S. Southworth, D. Rosenkrans-retired, E. Olson, (Wrangell-St. Elias NP&P), W.Rapp, R.Sherman, D.Vinson (Katmai NP&P), L.Fano, B. Eichenlaub, C.Wagner (Glacier Bay NP&P), C. Smith (Sitka NHP), D. Difulco, A.Freeburg, J.Rasic (Yukon Charley NP), Pat Biard, Michigan Technological University, Social Sciences Department), K. Meyer, B.Anderson (Alaska Regional Office, Natural Resources), D.Gewalt, S. Fierrea (Alaska Regional Office, Cultural Resources), B.Merrill(Alaska Regional Office, Planning), S.Vantrease, B.Huebner, B.Harris (Alaska Regional Office, EPD), B. Strobe, S. Devenney (Alaska Regional Office, Lands). Private companies under contract included Aerometric, Anchorage Alaska, Walker Alaska, Anchorage Alaska, Aeromap, Anchorage Alaska, Quantum Spatial, Anchorage Alaska, R&M Consultants, Anchorage Alaska, Dowl Engineers, Anchorage Alaska, Fielding Link, Landscape Architect, ARO, Anchorage Alaska, Shawn Jones, Archeologist (KLG0, Skagway)

**Spatial Reference:** 4269 (4269)

#### Initial Extent:

XMin: -164.87414012367682

YMin: 53.6033348346415

## NPS National Geospatial Program Data Services Directory

[Home](#) > [services](#) > [Testing](#) > [NPS\\_Public\\_Trails\\_GCS\\_NAD83 \(MapServer\)](#)

[JSON](#) | [SOAP](#)

### Testing/NPS\_Public\_Trails\_GCS\_NAD83 (MapServer)

**View In:** [ArcGIS JavaScript](#) [ArcGIS.com Map](#) [Google Earth](#) [ArcMap](#) [ArcGIS Explorer](#)

**View Footprint In:** [ArcGIS.com Map](#)

**Service Description:** This feature class contains lines representing formal and informal trails as well as routes within and across National Park Units. This dataset uses a set of core attributes designed by the NPS enterprise geospatial committee.

**Map Name:** Layers

#### Legend

[All Layers and Tables](#)

[Dynamic Legend](#)

[Dynamic All Layers](#)

#### Layers:

- [NPS\\_Public\\_Trails \(0\)](#)

#### Description:

**Copyright Text:** NPS, AKRO, K.Waterman(Kawerak Inc.), Noah Naylor(NW Arctic Borough), S.Georgette(USFWS-Selawik), B.Saito(ADFG-Kotzebue), C.Nayokpuk(Nayokpuk Services, Shishmaref), W.Guess,(NPS, Nome), M.Johnson(NPS,Kotzebue), J.Cusick, S. Devenney (NPS, GIS Team, Anchorage), URS(Anchorage), D.Kurtz, C. Kreidemann, Carson Odhner (NPS,Kenai Fjords), Jon Paynter, B. Schroeder, Steve Homan, Steve Carwile, A. Lindeman, C.Chiodo, A.Jirout,J.Zimmerman,A. Eddington (NPS, Denali NP&P), B. Mangipane, J.Branson, K.Sutton (NPS,Lake Clark NP&P), J.Wilbarger, A.Baldwin, Shawn Jones (NPS,Klondike NP), Parks Canada (Klondike), J.Scott, E.Guthrie, J.Baker S. Southworth, D. Rosenkrans-retired, E. Olson, (Wrangell-St. Elias NP&P), W.Rapp, R.Sherman, D.Vinson (Katmai NP&P), L.Fano, B. Eichenlaub, C.Wagner (Glacier Bay NP&P), C. Smith (Sitka NHP), D. Difulco, A.Freeburg, J.Rasic (Yukon Charley NP), Pat Biard, Michigan Technological University, Social Sciences Department), K. Meyer, B.Anderson (Alaska Regional Office, Natural Resources), D.Gewalt, S. Fierrea (Alaska Regional Office, Cultural Resources), B.Merrill(Alaska Regional Office, Planning), S.Vantrease, B.Huebner, B.Harris (Alaska Regional Office, EPD), B. Strobe, S. Devenney (Alaska Regional Office, Lands). Private companies under contract included Aerometric, Anchorage Alaska, Walker Alaska, Anchorage Alaska, Aeromap, Anchorage Alaska, Quantum Spatial, Anchorage Alaska, R&M Consultants, Anchorage Alaska, Dowl Engineers, Anchorage Alaska, Fielding Link, Landscape Architect, ARO, Anchorage Alaska, Shawn Jones, Archeologist (KLG0, Skagway)

**Spatial Reference:** 4269 (4269)

# External Mapservices



EXPERIENCE  
YOUR  
AMERICA

## RISD Public REST Services Directory

[Home](#) > [services](#)

[JSON](#) | [SOAP](#)

**Folder: /**

**Folders:**

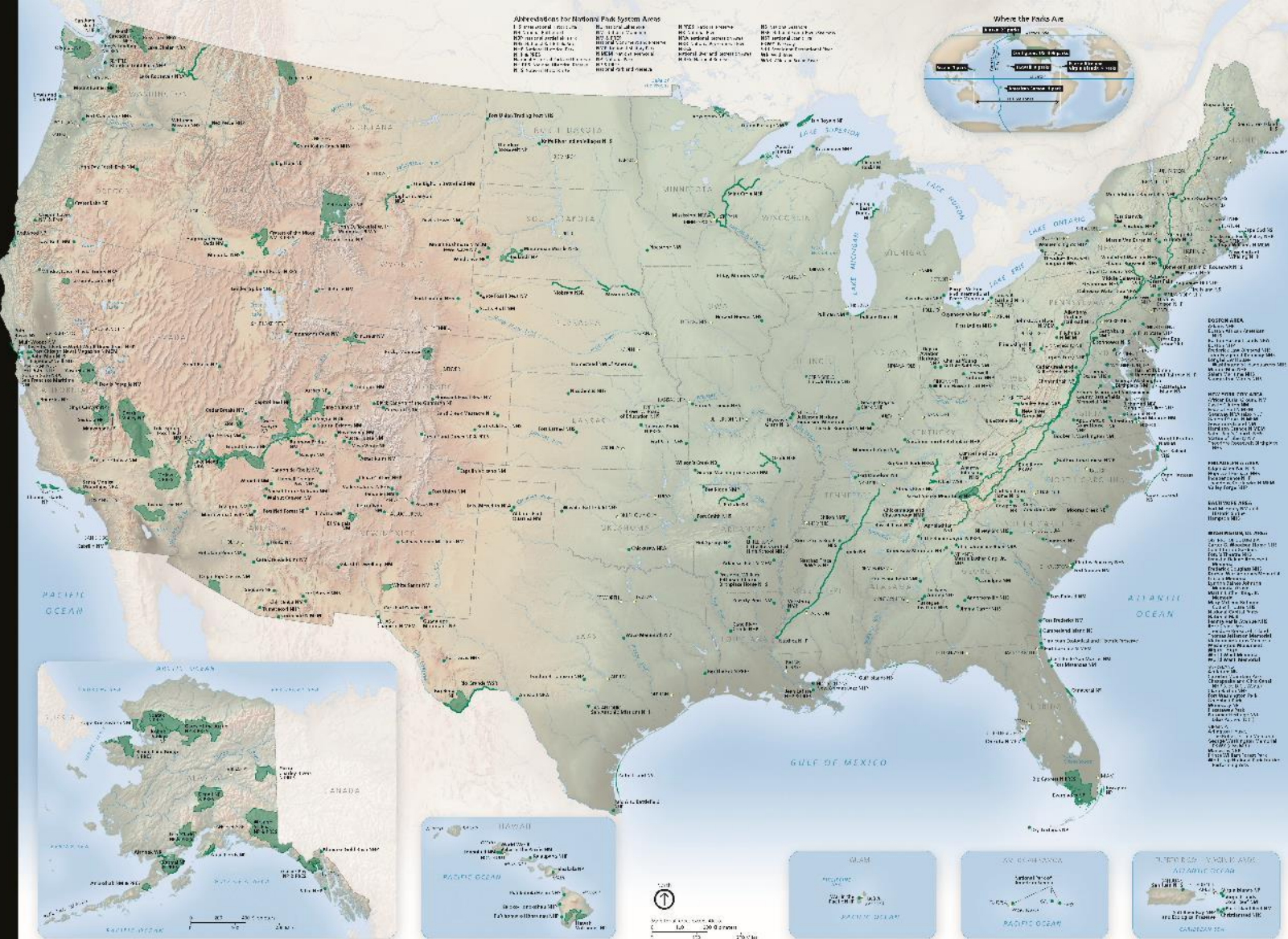
- [akr](#)
- [cultural\\_resources](#)
- [Hydro](#)
- [pwr](#)
- [ser](#)
- [upde](#)
- [Wilderness](#)
- [WildlandFire](#)

**Services:**

- [Access\\_Line\\_Map \(MapServer\)](#)
- [LandResourcesDivisionTractAndBoundaryService \(MapServer\)](#)

**Supported Interfaces:** [REST](#) [SOAP](#) [Sitemap](#) [Geo Sitemap](#)

# QUESTIONS?



Seshu Vaddey,  
National GIS Coordinator  
[Seshu\\_vaddey@nps.gov](mailto:Seshu_vaddey@nps.gov)

EXPERIENCE  
YOUR  
AMERICA