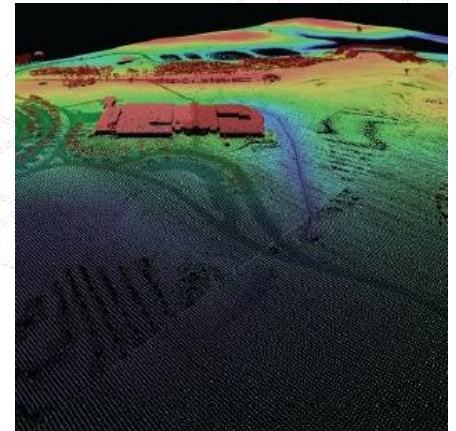
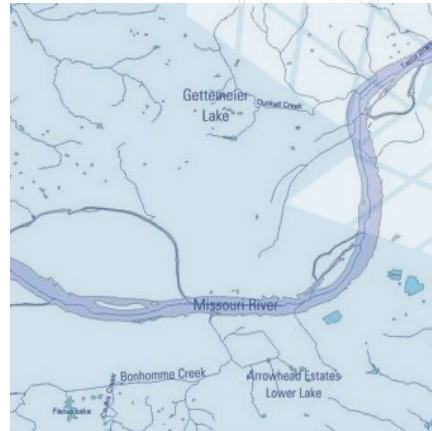
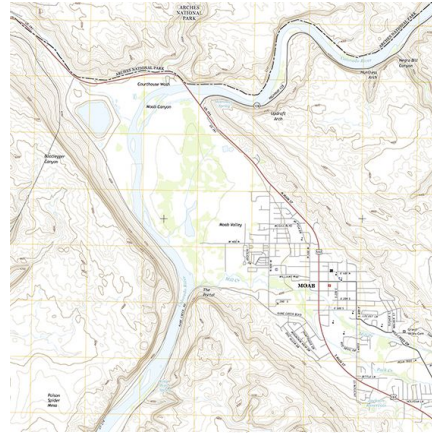




USGS Efforts to Consolidate Geospatial Data in the Federal Government



An overview of USGS trails collaborations and updates.
Date 5/31/2017
Greg Matthews



Introduction

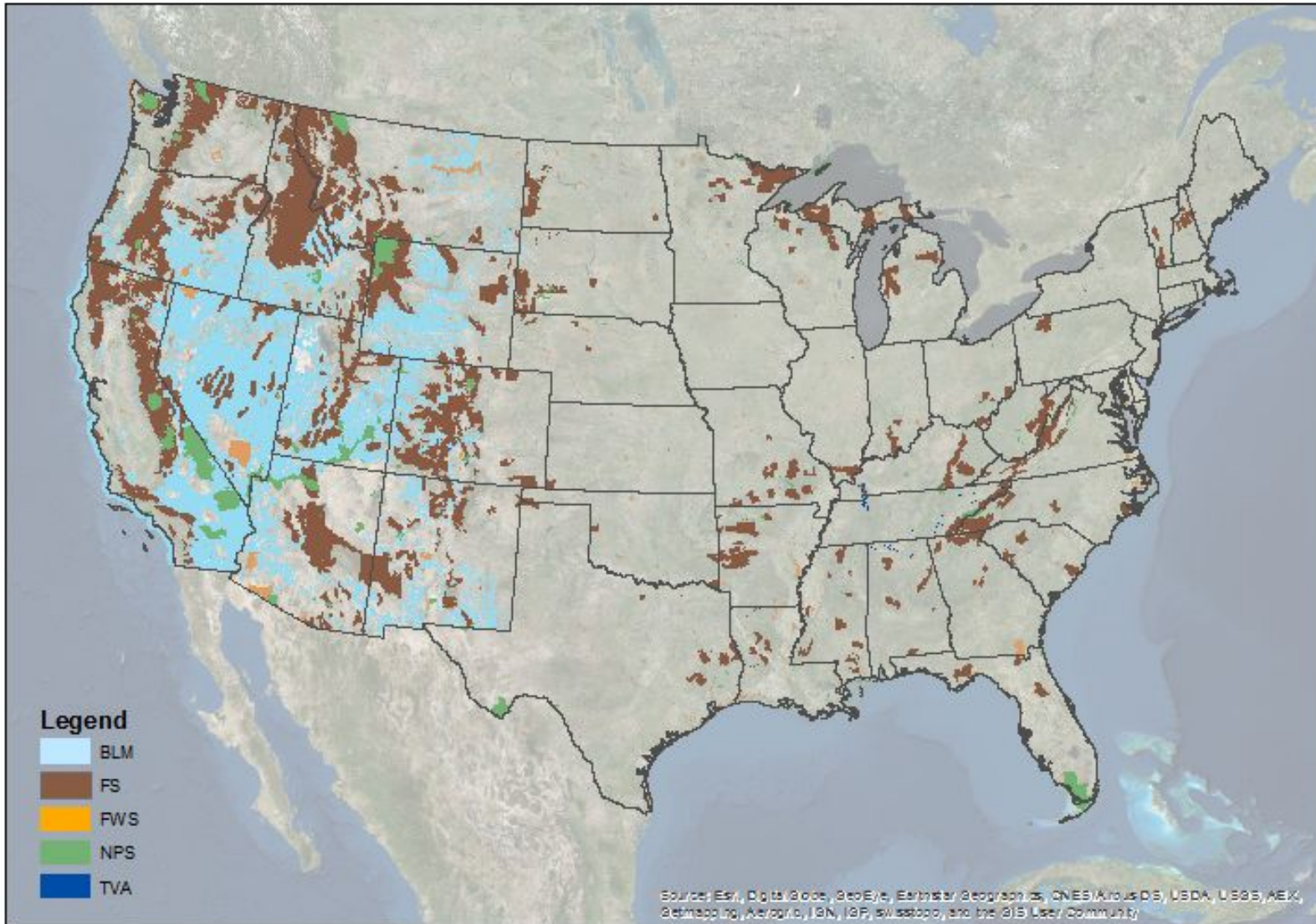
USGS

The following slides provide an update on the U.S. Geological Survey Trails and Recreational Data activities. Both the amount of data coming from partners and the number of partners are increasing. The USGS is interested in continuing the trend of aggregating national trails and recreational data.



+ An Overview of Trail Collaboration Efforts

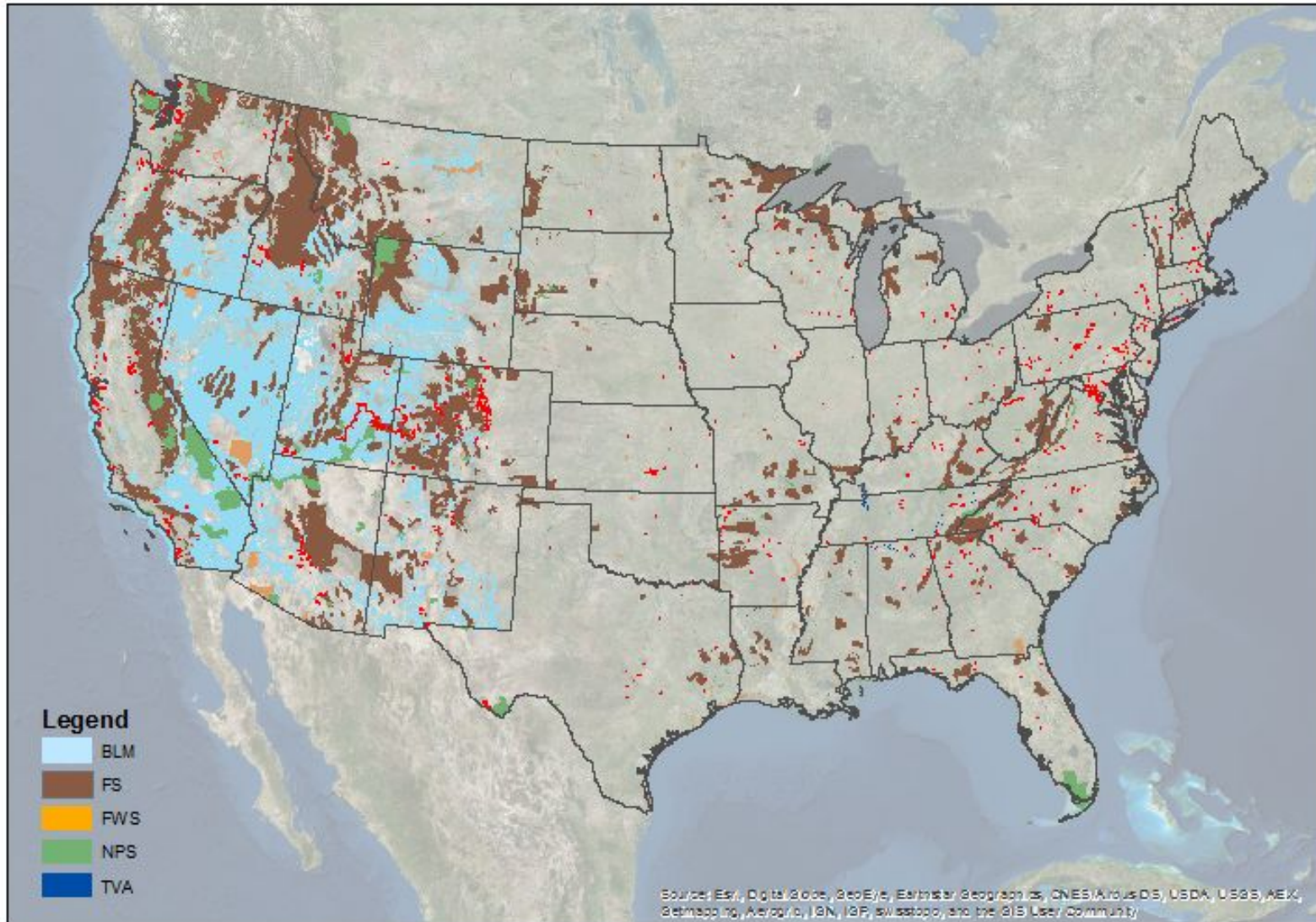
Land Management Agency Distribution



+ An Overview of Trail Collaboration Efforts

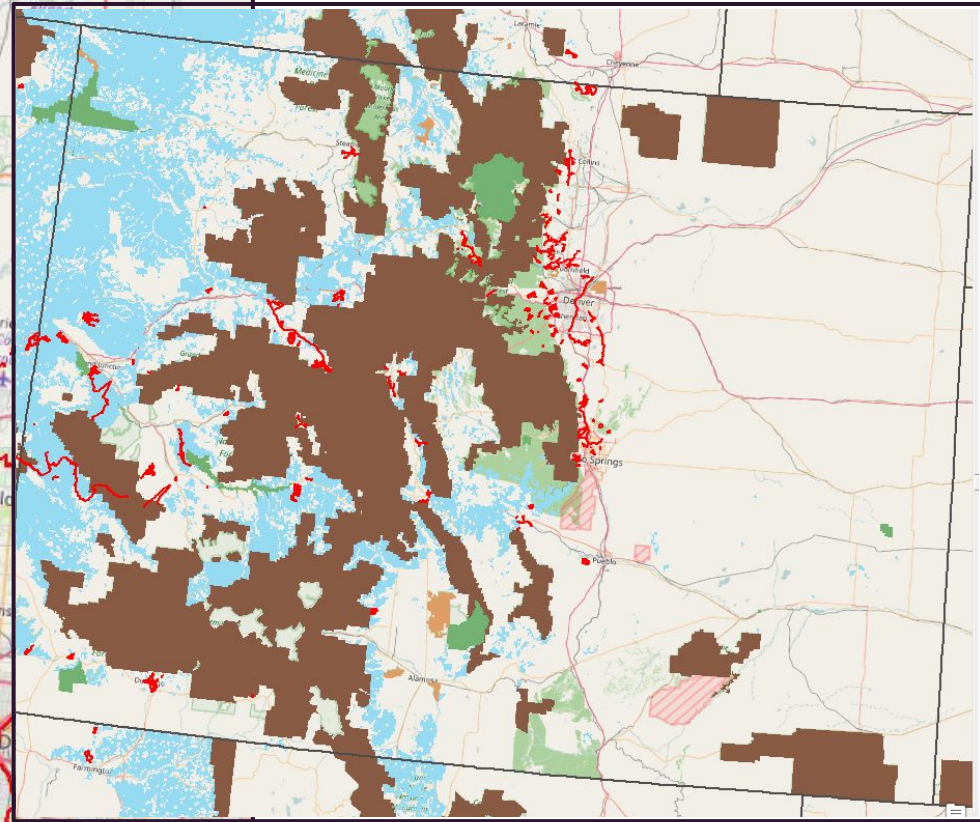
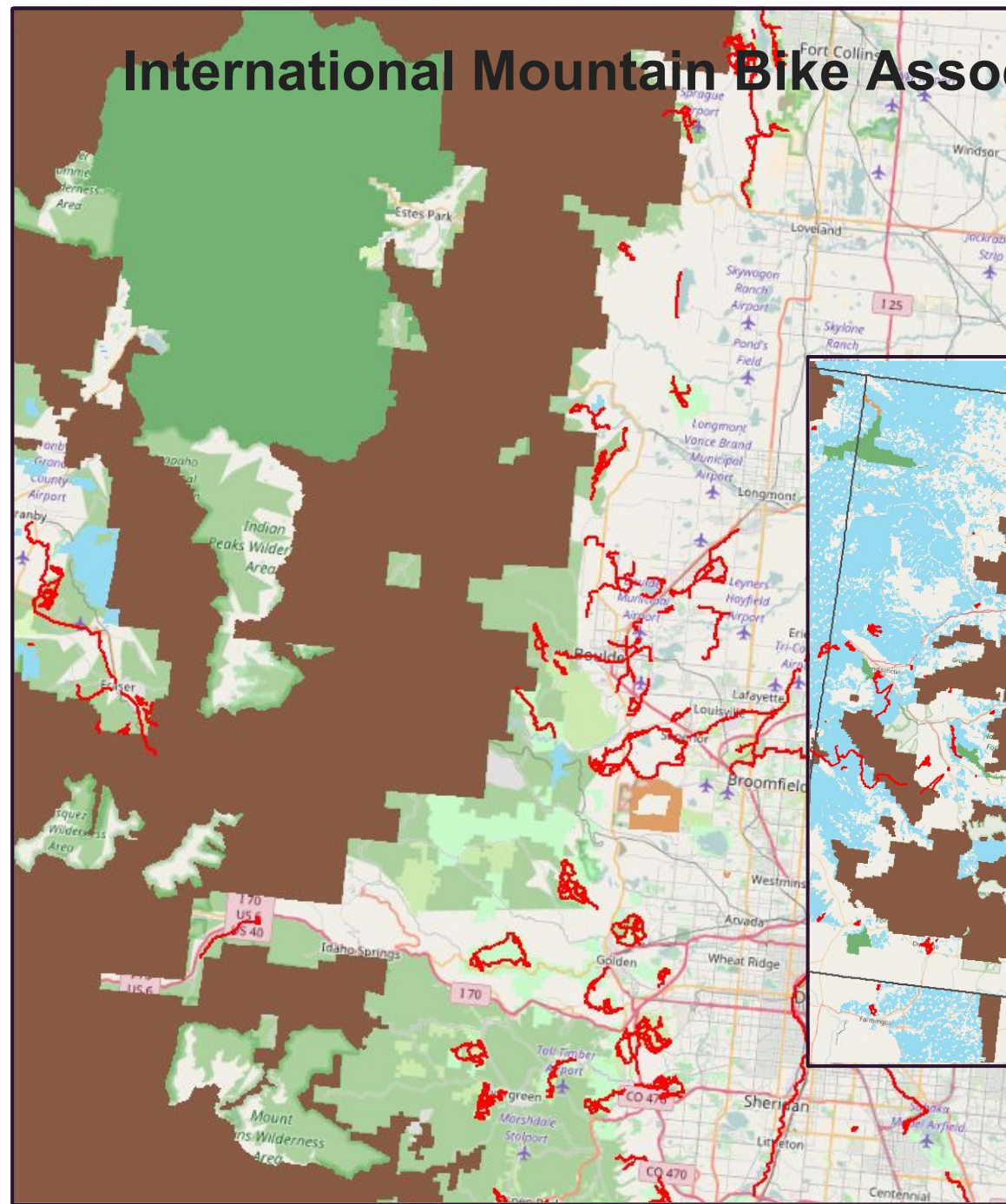
International Mountain Bike Association and REI

-IMBA/REI 15,171 mi.



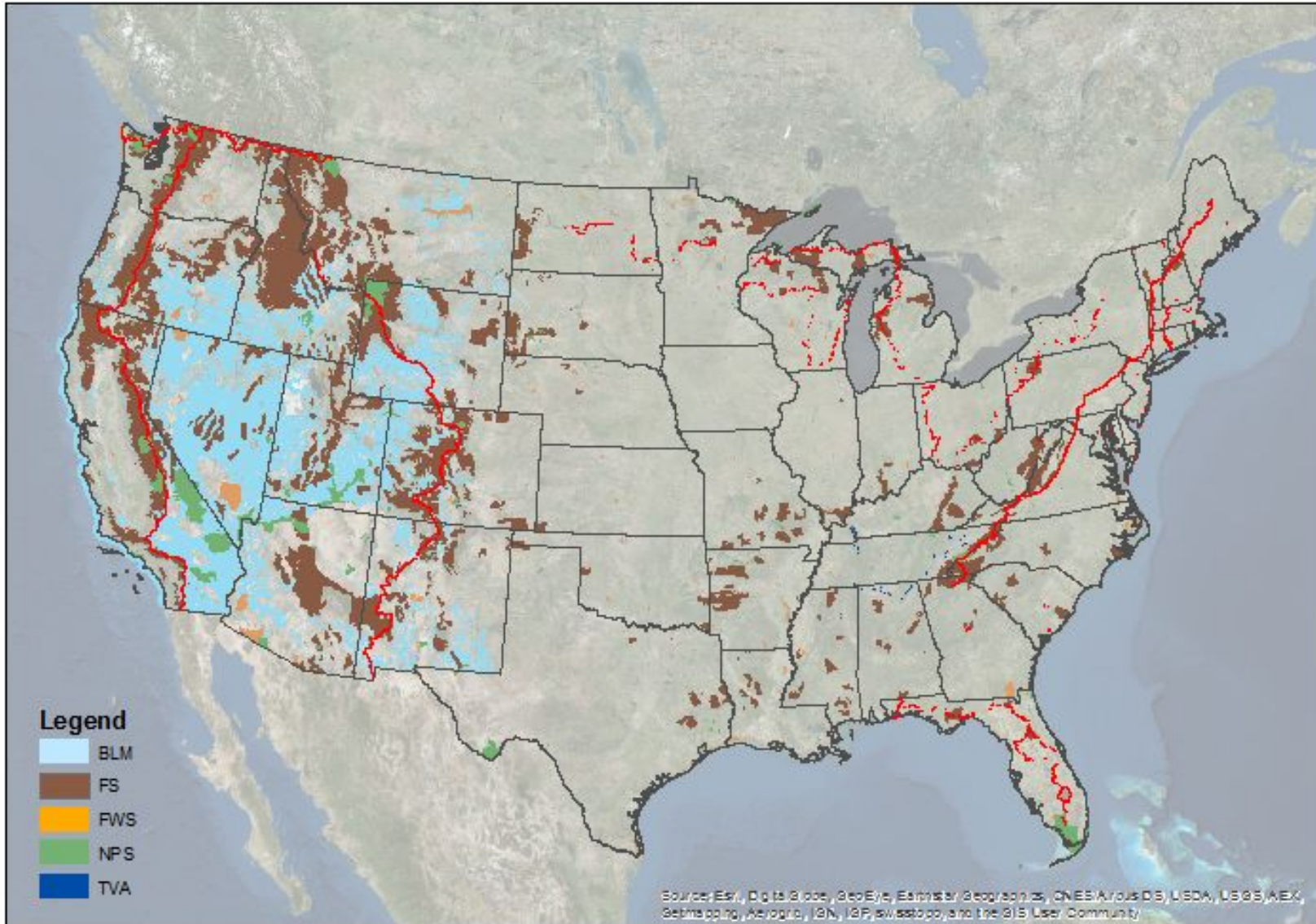
International Mountain Bike Association and REI

IMBA 15,171 mi



+ An Overview of Trail Collaboration Efforts

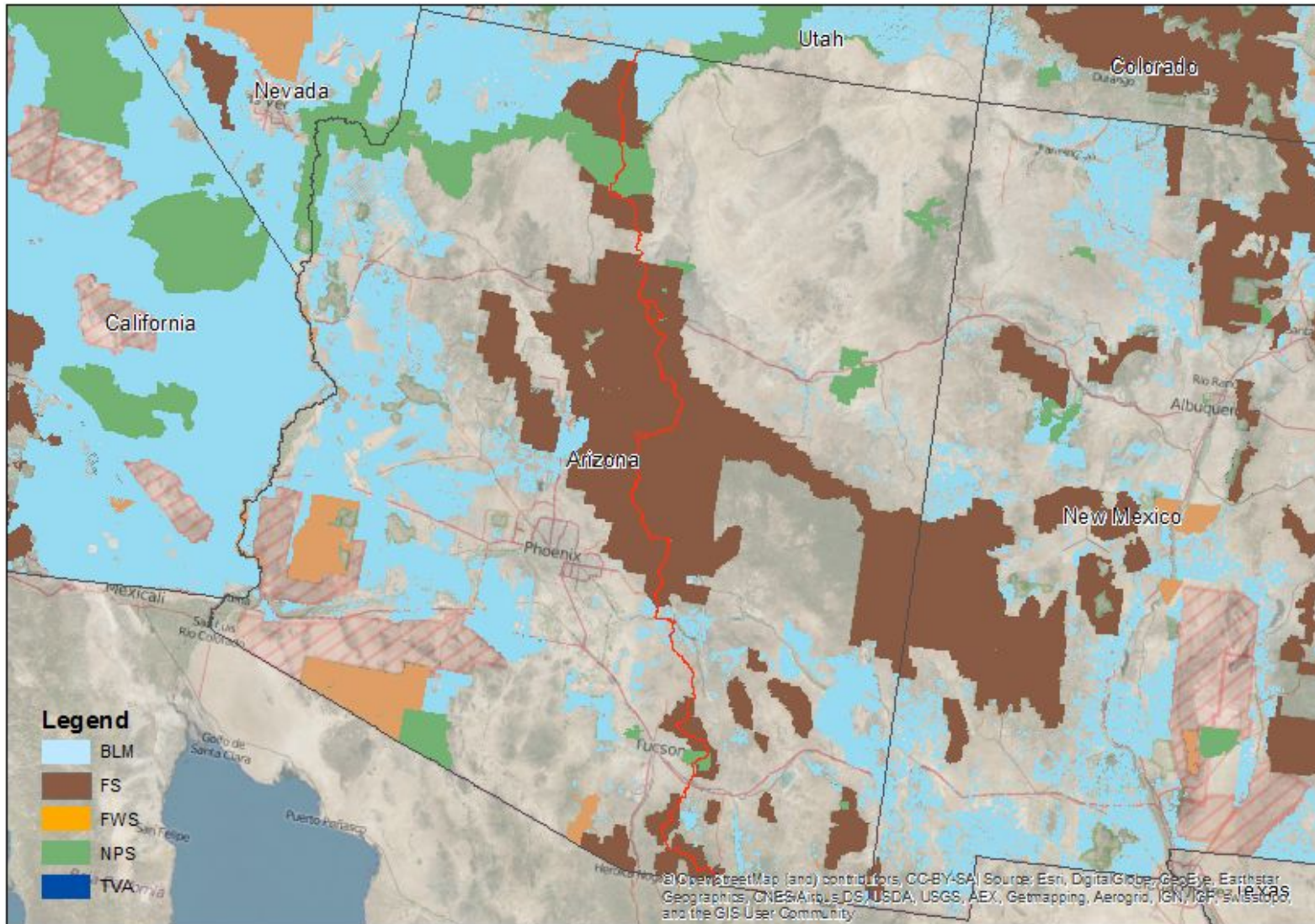
National Scenic Trail System



+ An Overview of Trail Collaboration Efforts

Arizona National Scenic Trail

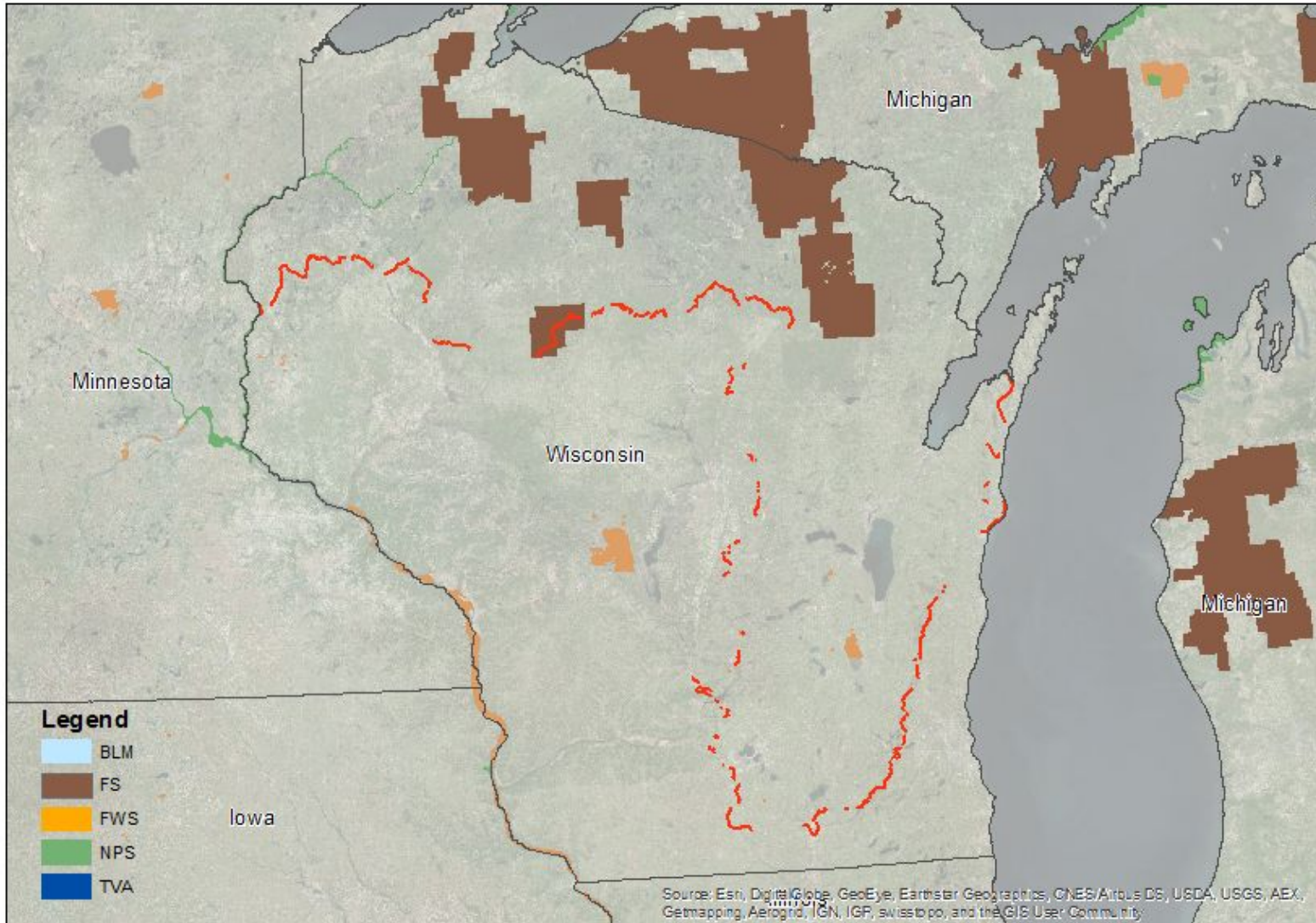
- Arizona Trail Association 785 mi.



+ An Overview of Trail Collaboration Efforts

Ice Age National Scenic Trail

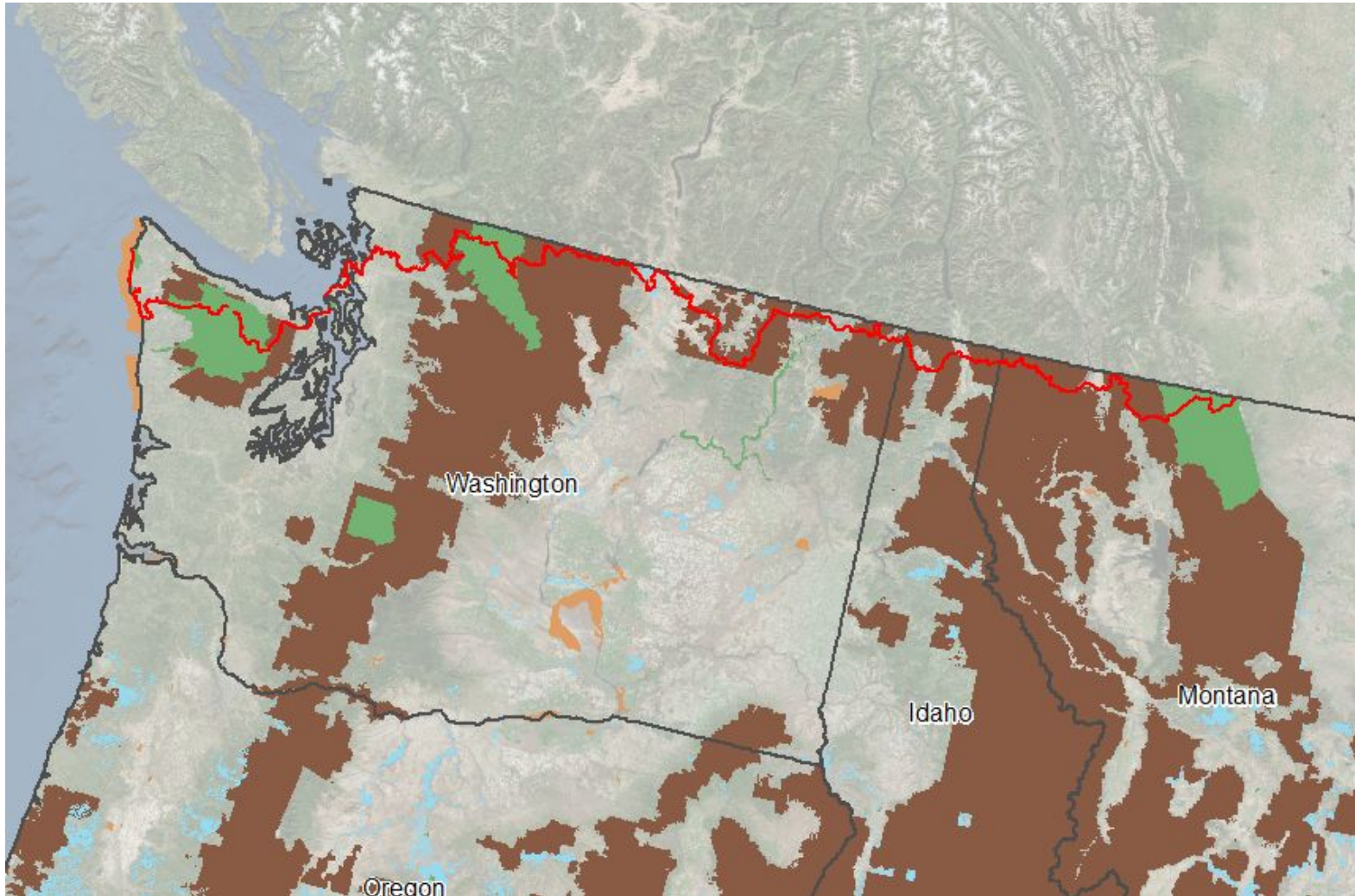
- Ice Age Trail Alliance 668 mi.



+ An Overview of Trail Collaboration Efforts

Pacific Northwest Scenic Trail

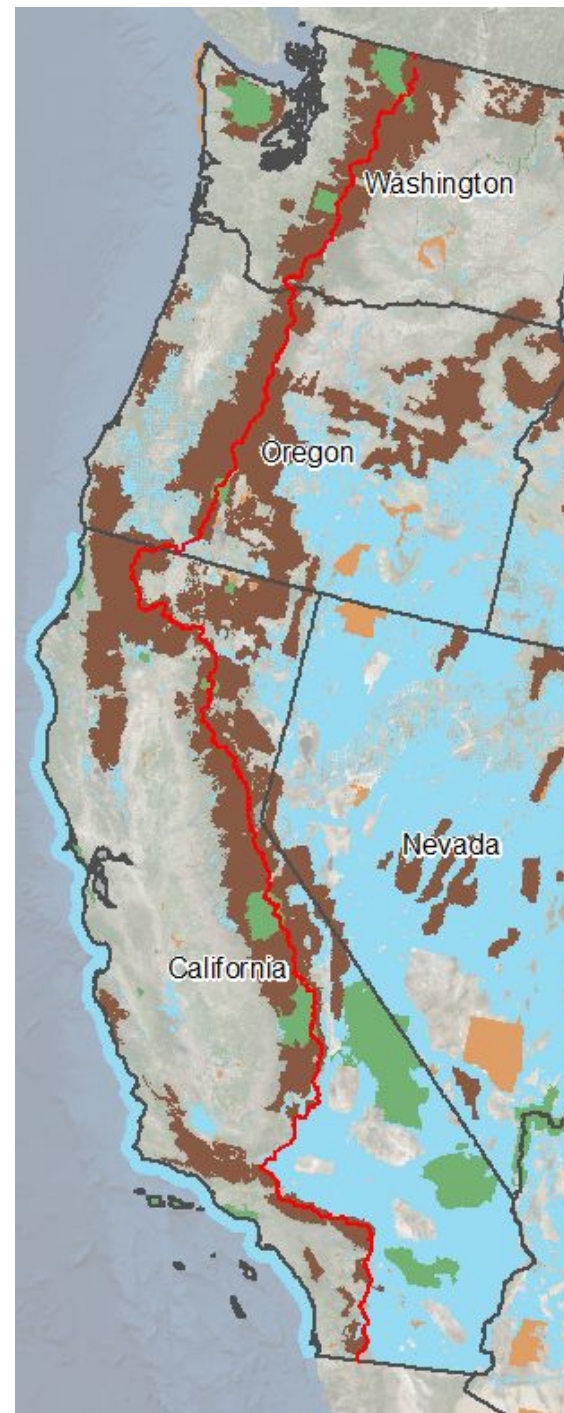
- USFS Region 6 1204 mi.



+ An Overview of Trail Collaboration Efforts

Pacific Crest National Scenic Trail

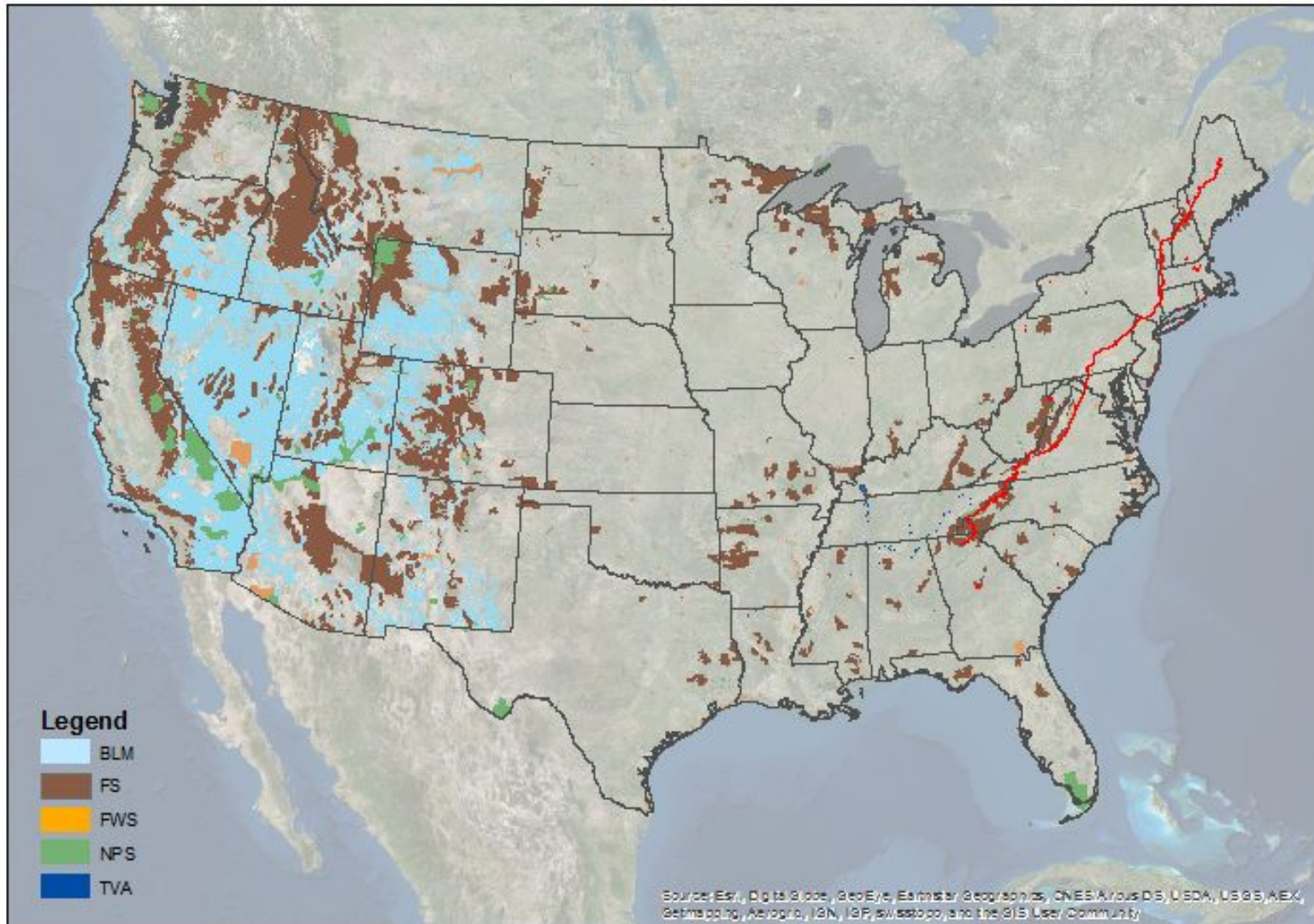
USFS 2570 mi.



+ An Overview of Trail Collaboration Efforts

Appalachian National Scenic Trail

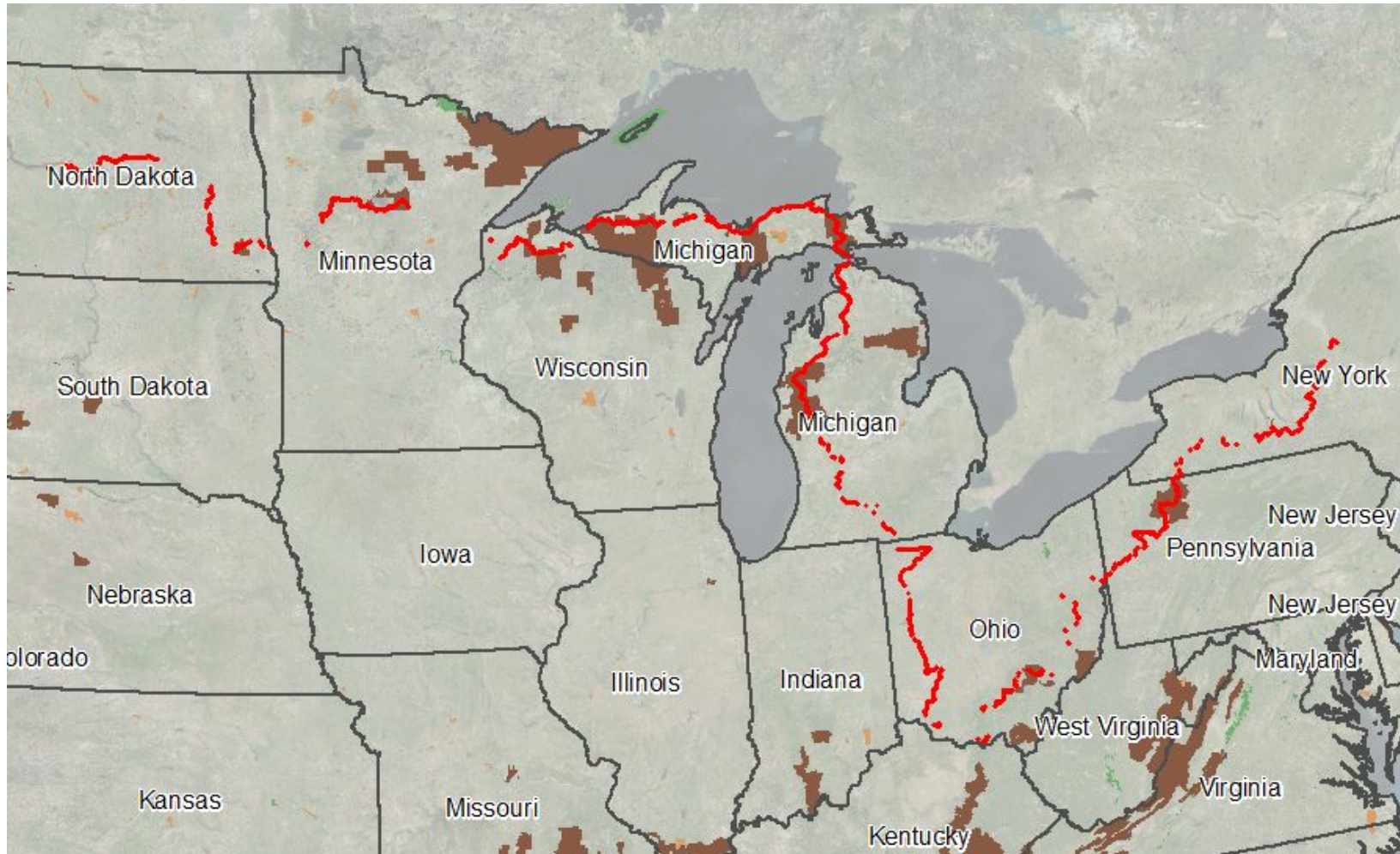
- NPS 2,125 mi.



+ An Overview of Trail Collaboration Efforts

North Country National Scenic Trail

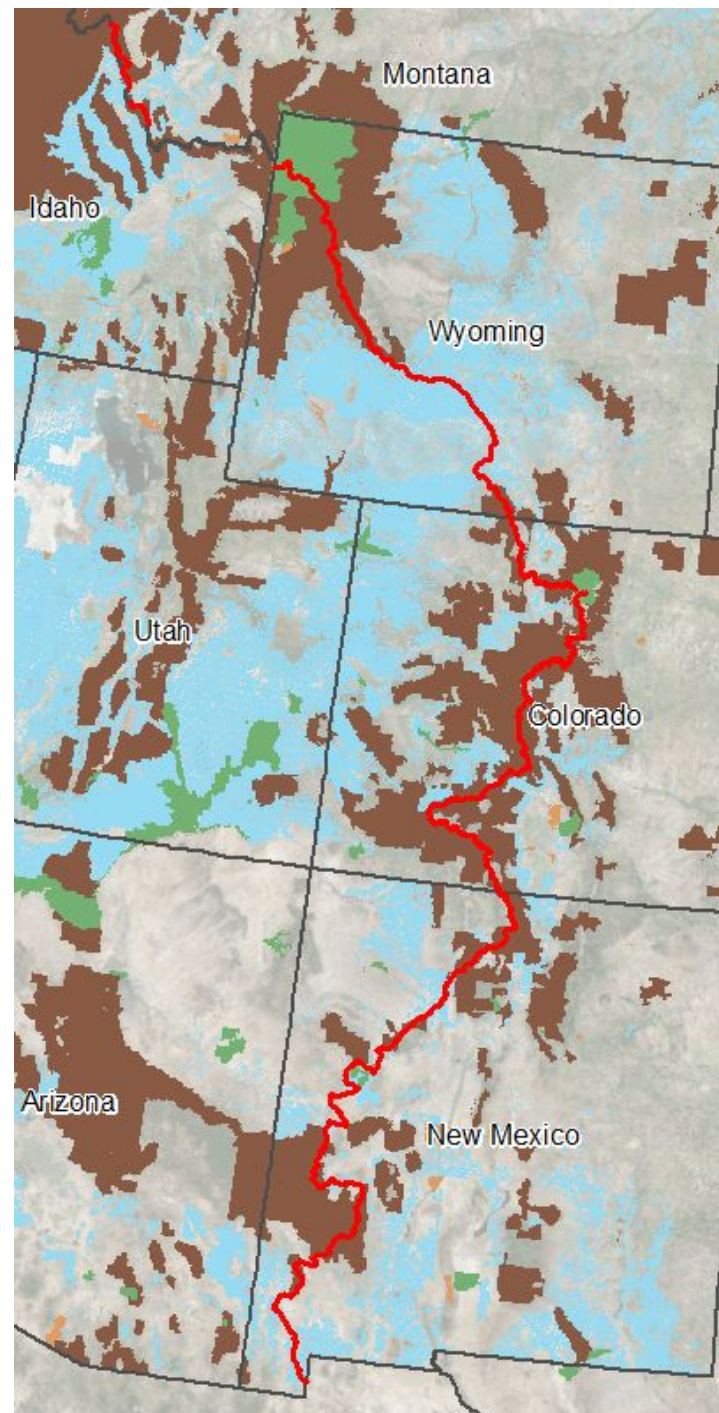
- NPS 2,223 mi



+ An Overview of Trail Collaboration Efforts

Continental Divide National Scenic Trail

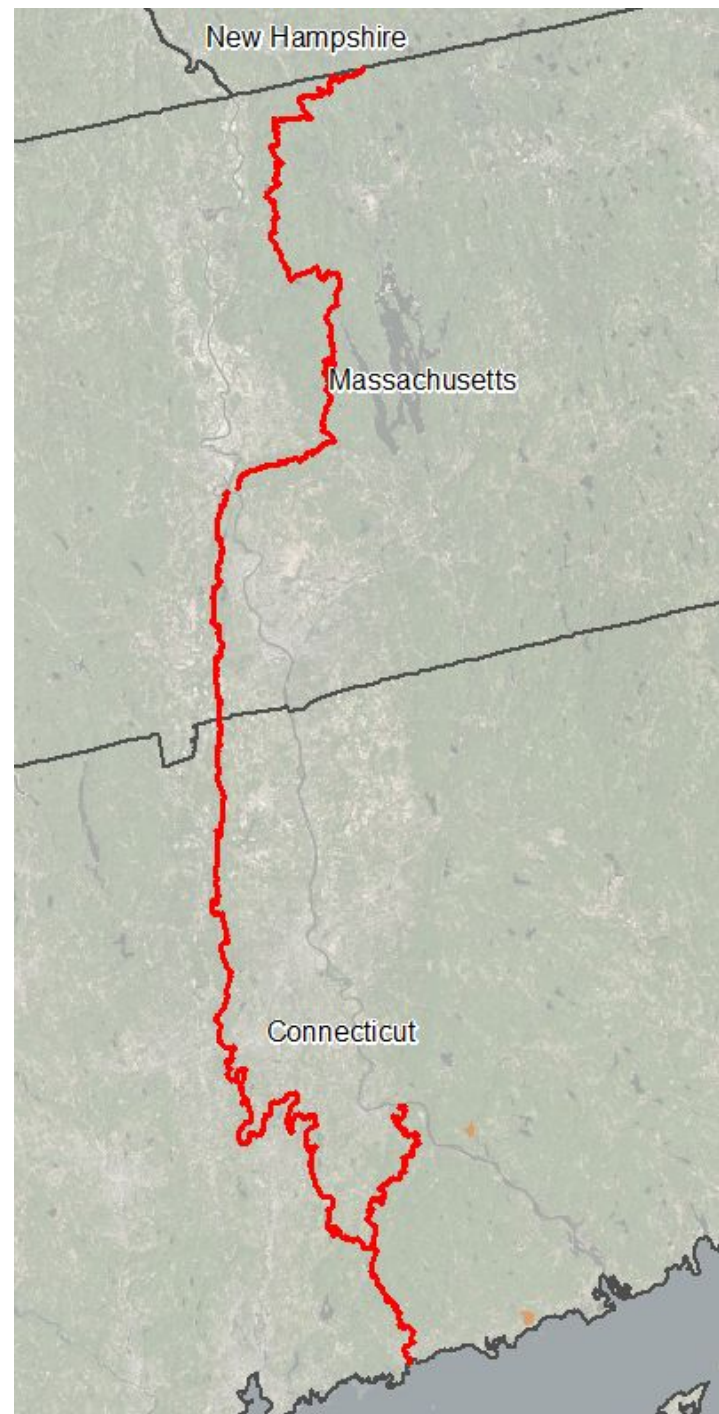
Continental Divide Trail Coalition 2,170 mi.



+ An Overview of Trail Collaboration Efforts

New England National Scenic Trail

Appalachian Mountain Club 226 mi

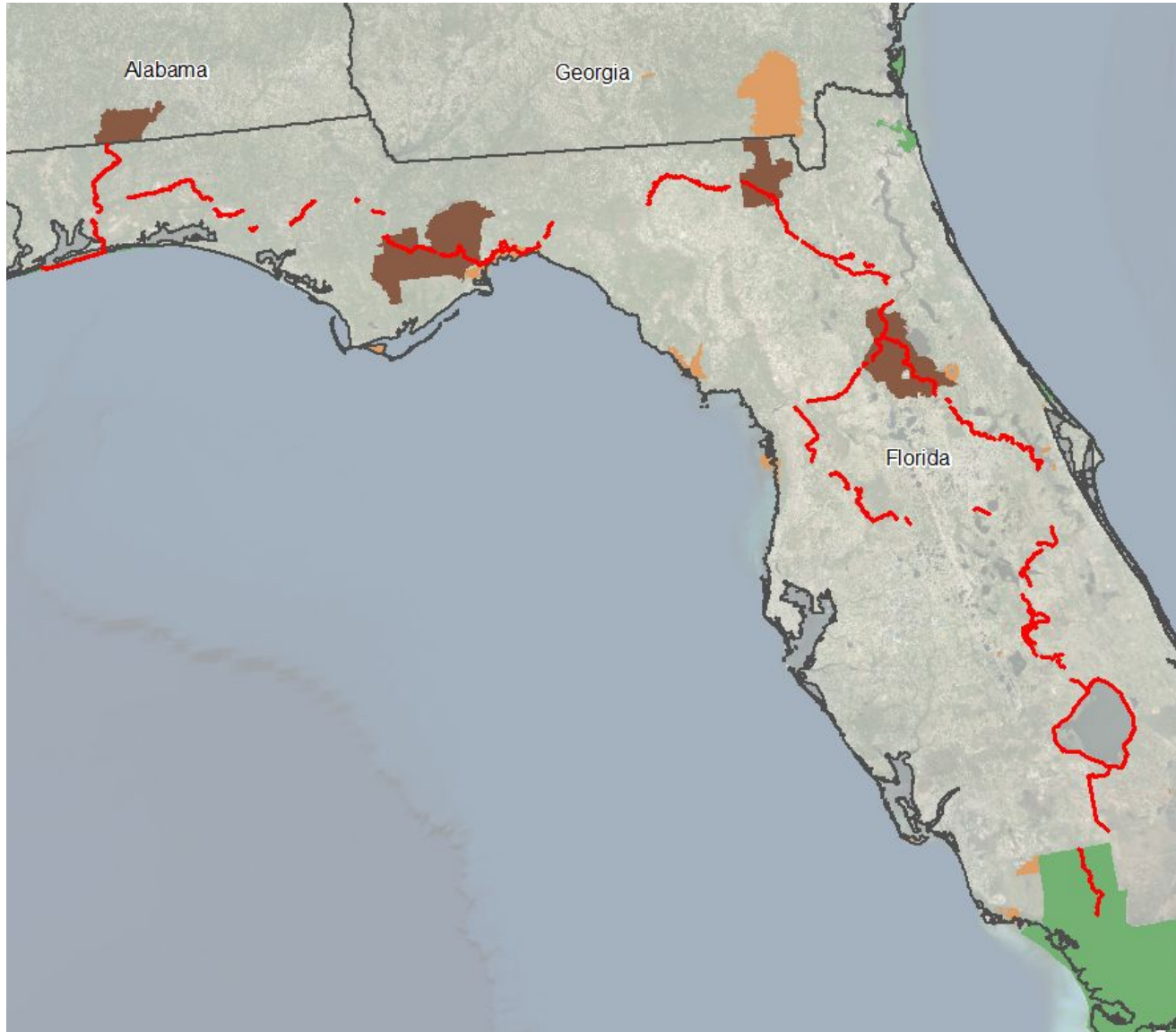




An Overview of Trail Collaboration Efforts

Florida National Scenic Trail

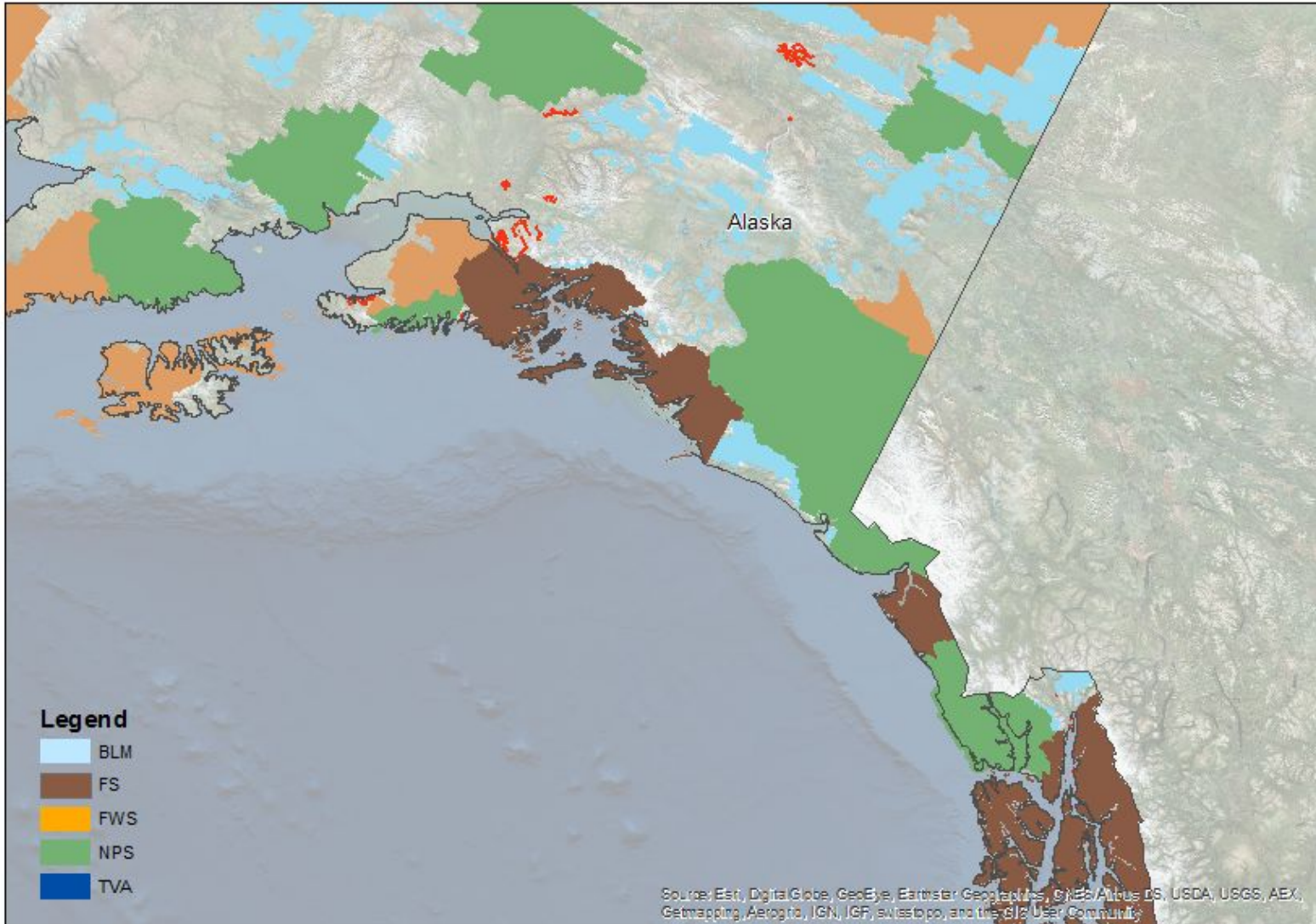
- USFS 1130 mi.



+ An Overview of Trail Collaboration Efforts

Alaska

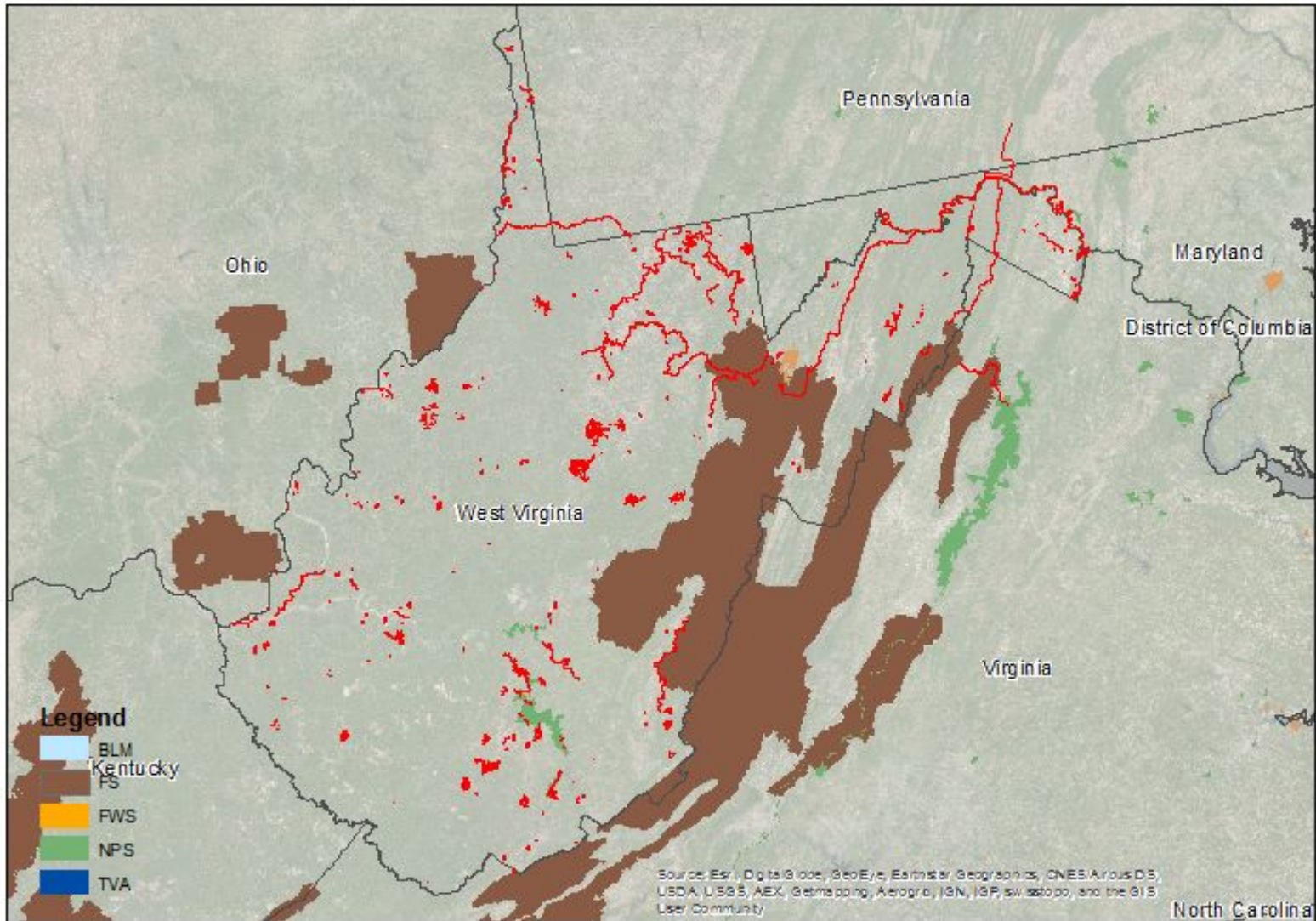
- Alaska Department of Natural Resources 716 mi.



+ An Overview of Trail Collaboration Efforts

West Virginia

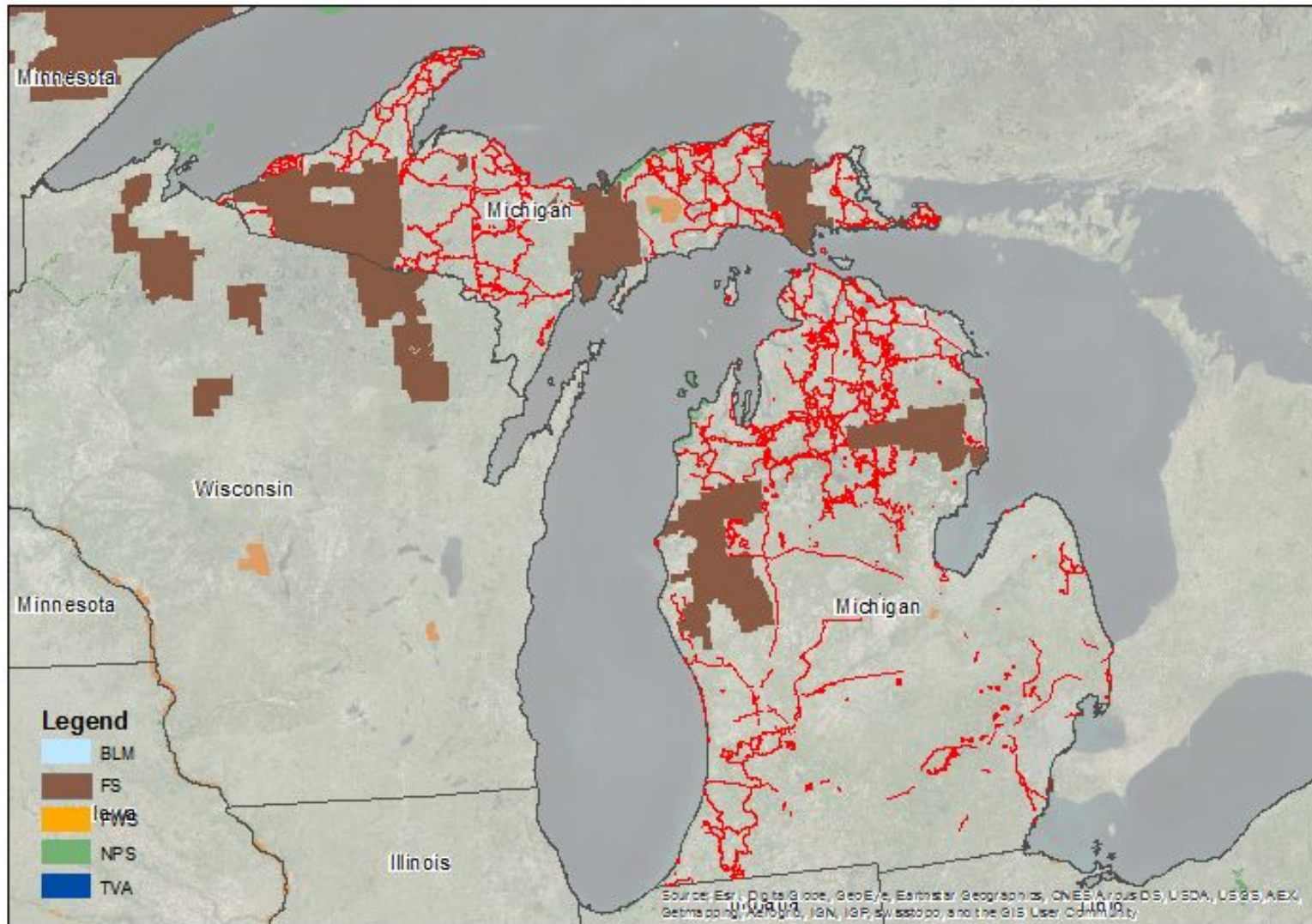
- West Virginia GIS Technical Center 2,491 mi.



+ An Overview of Trail Collaboration Efforts

Michigan

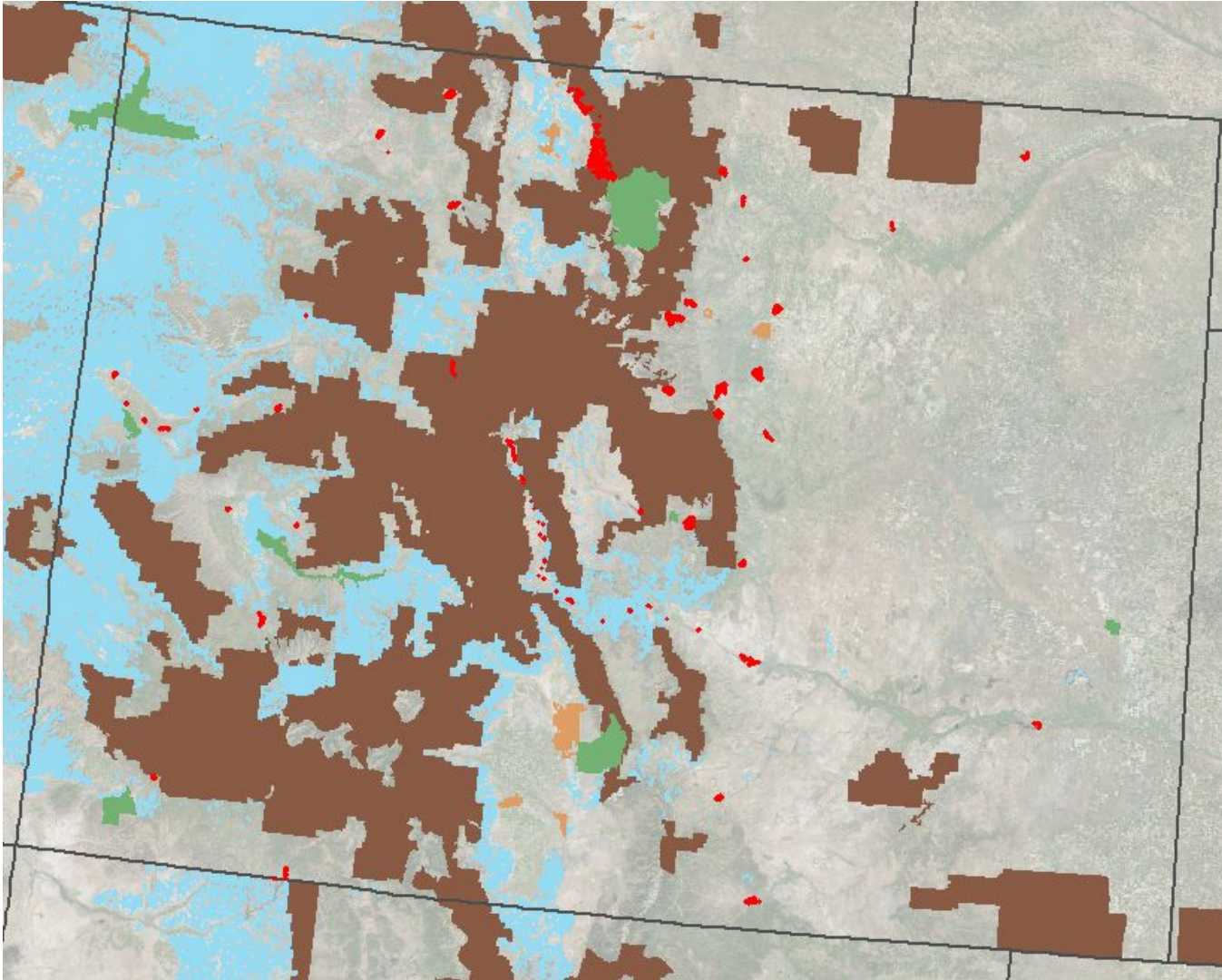
- Michigan Department of Natural Resources 9,027 mi.



+ An Overview of Trail Collaboration Efforts

Colorado

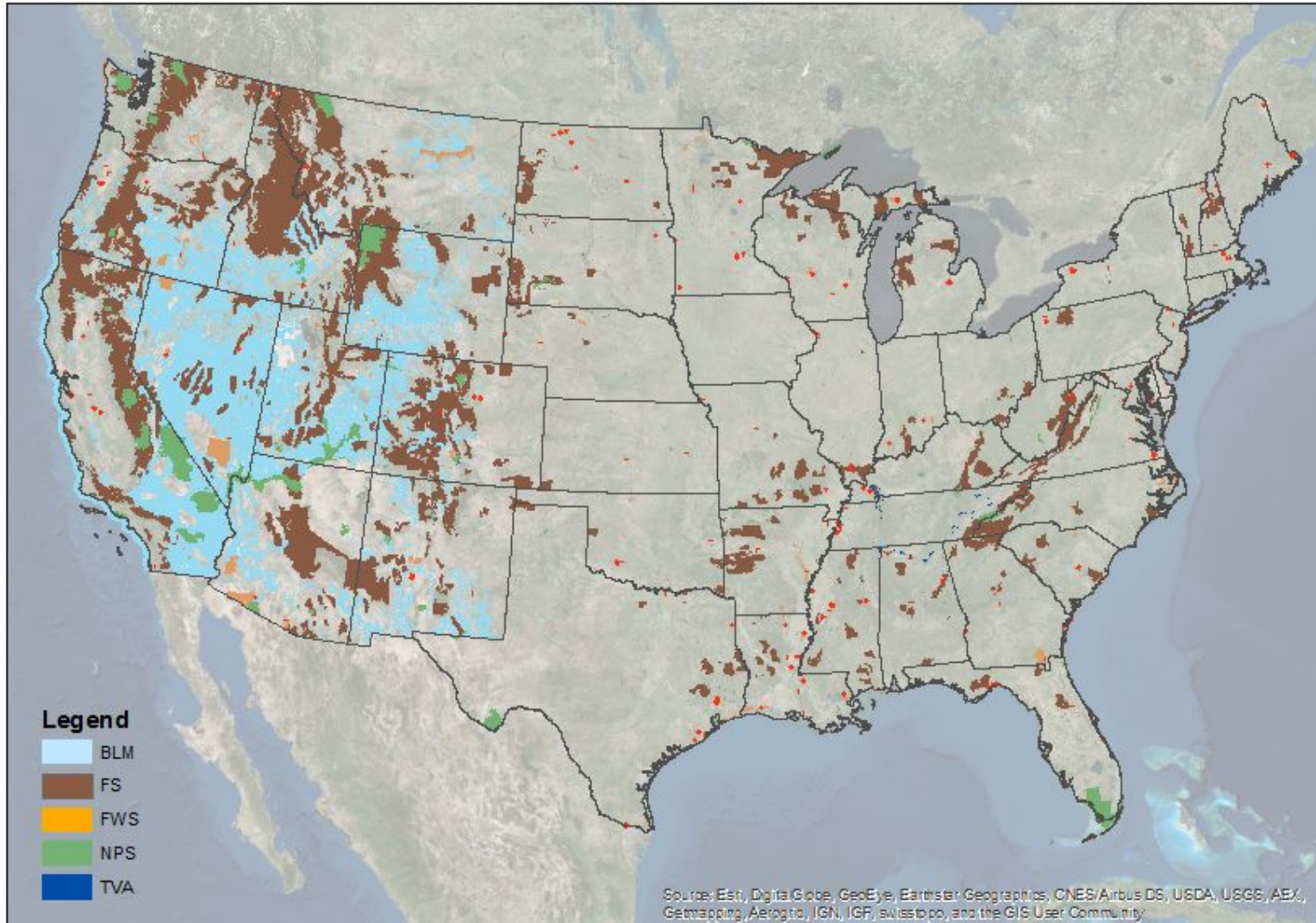
- Colorado Department of Natural Resources 621 mi.



+ An Overview of Trail Collaboration Efforts

Fish and Wildlife Service

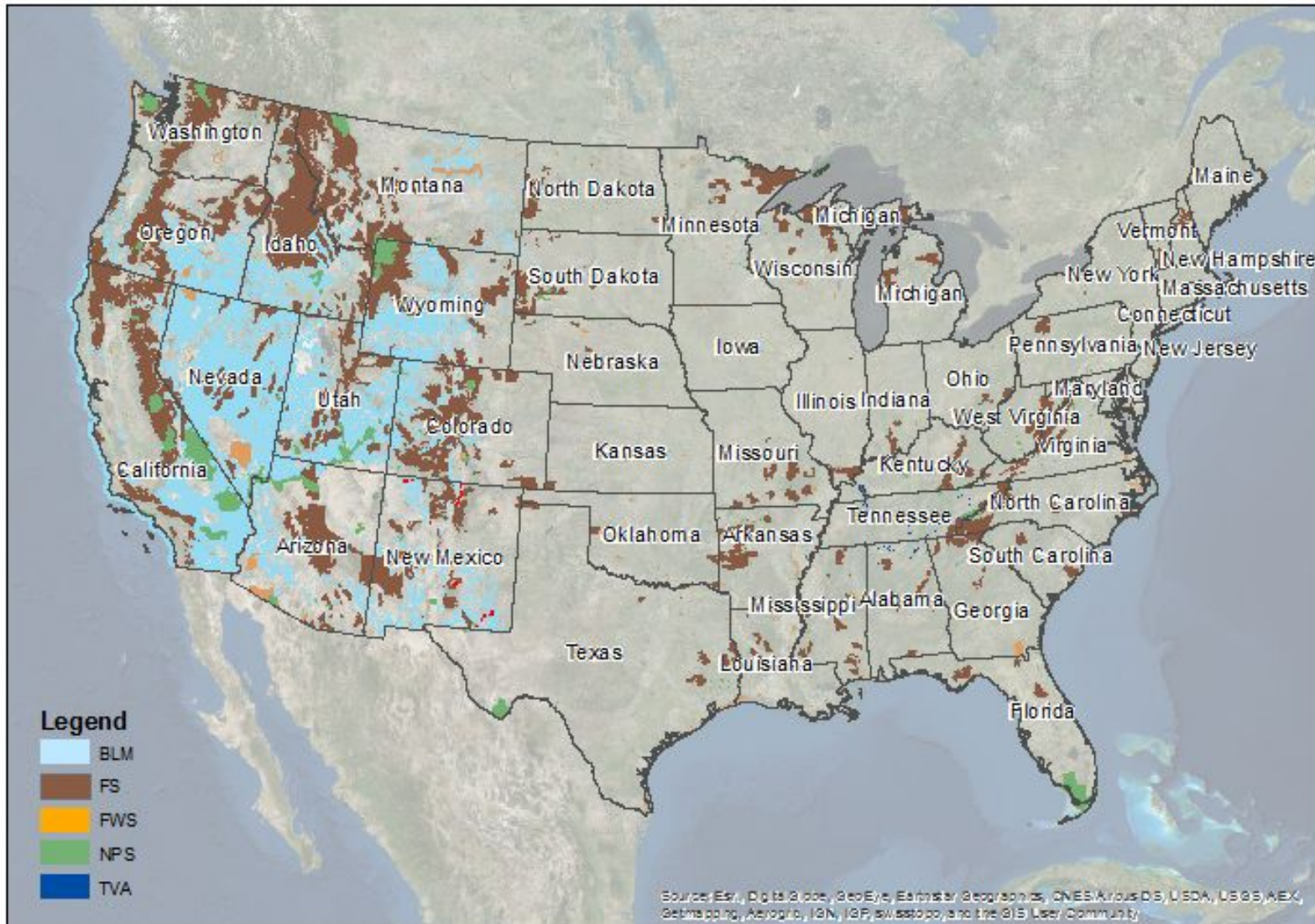
■ FWS 4,567 mi



+ An Overview of Trail Collaboration Efforts

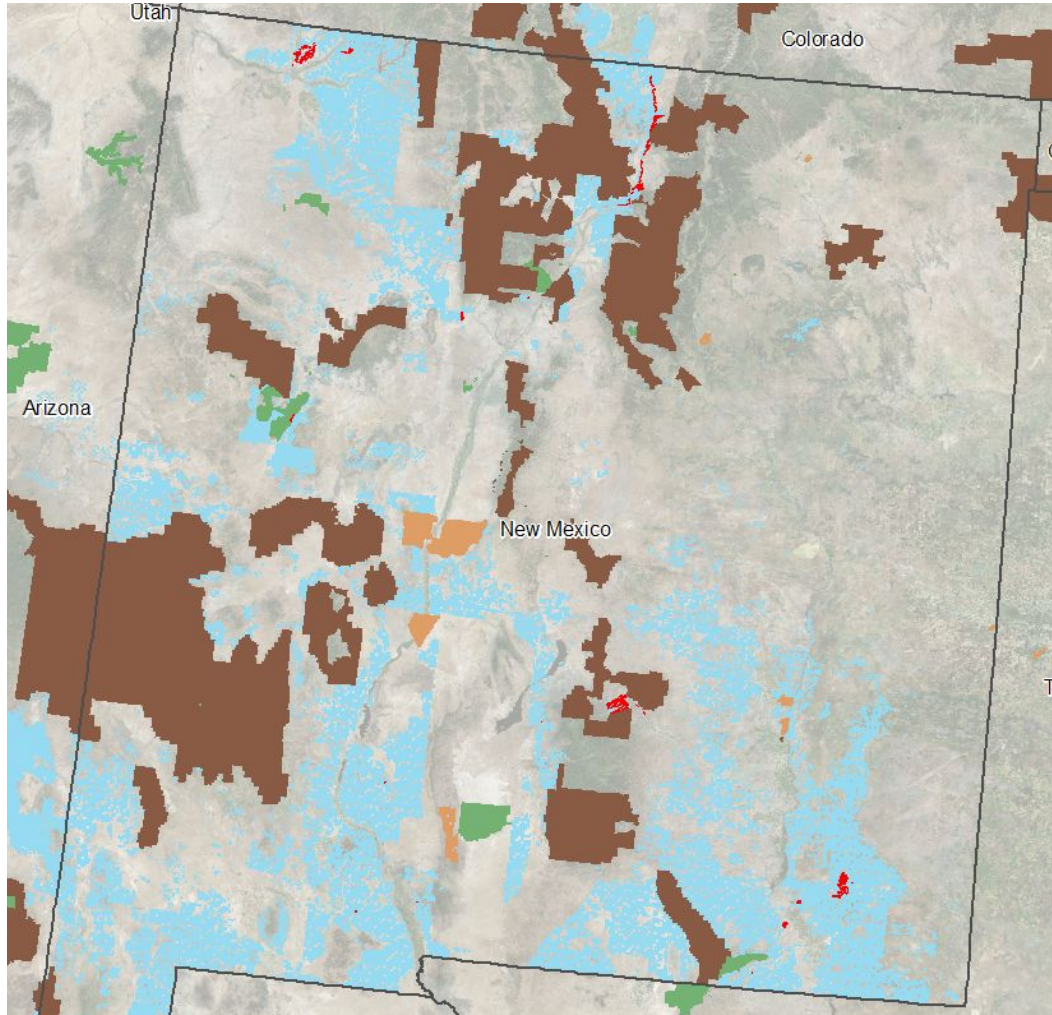
Bureau of Land Management

- BLM 479 mi



+ An Overview of Trail Collaboration Efforts

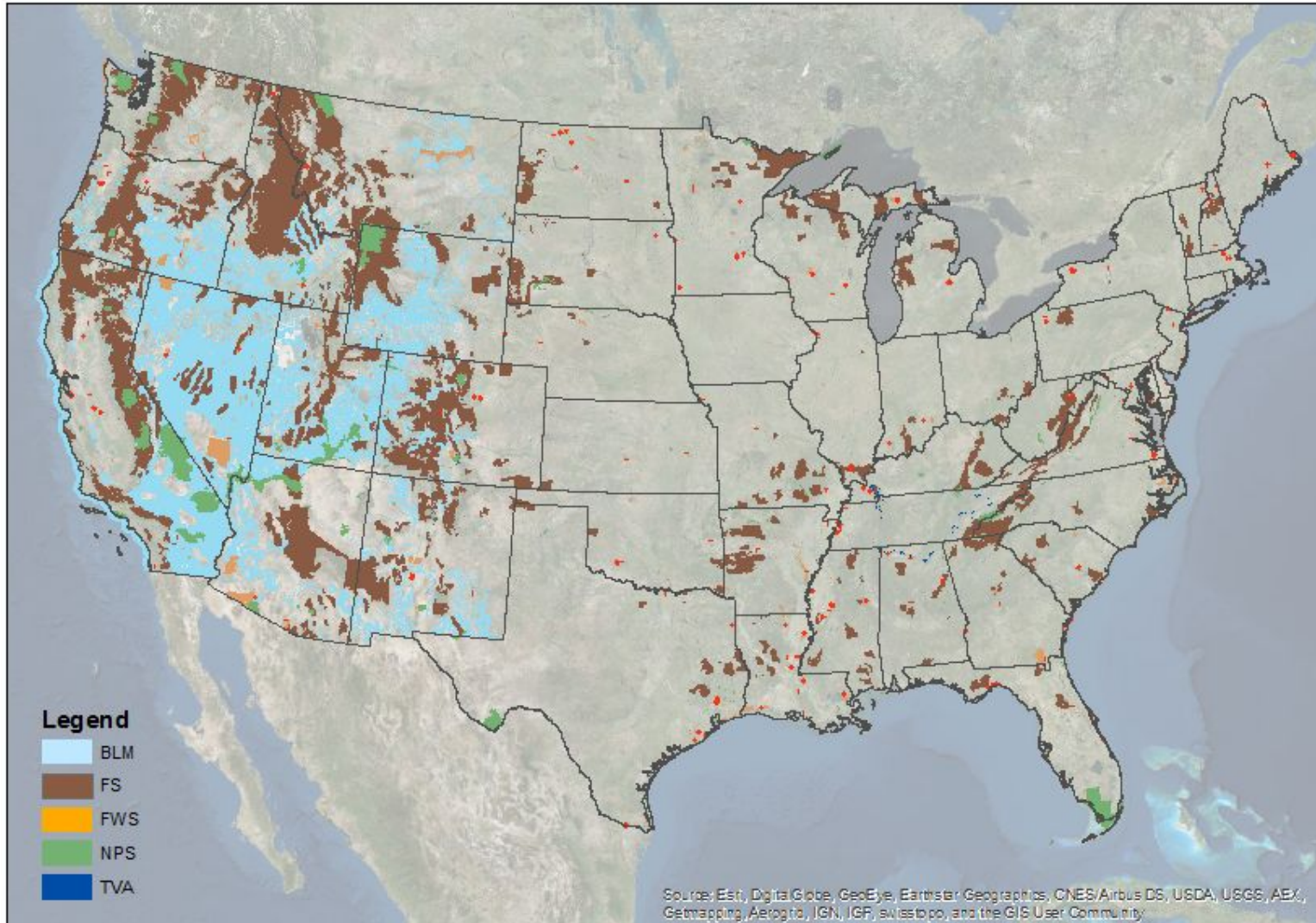
Bureau of Land Management



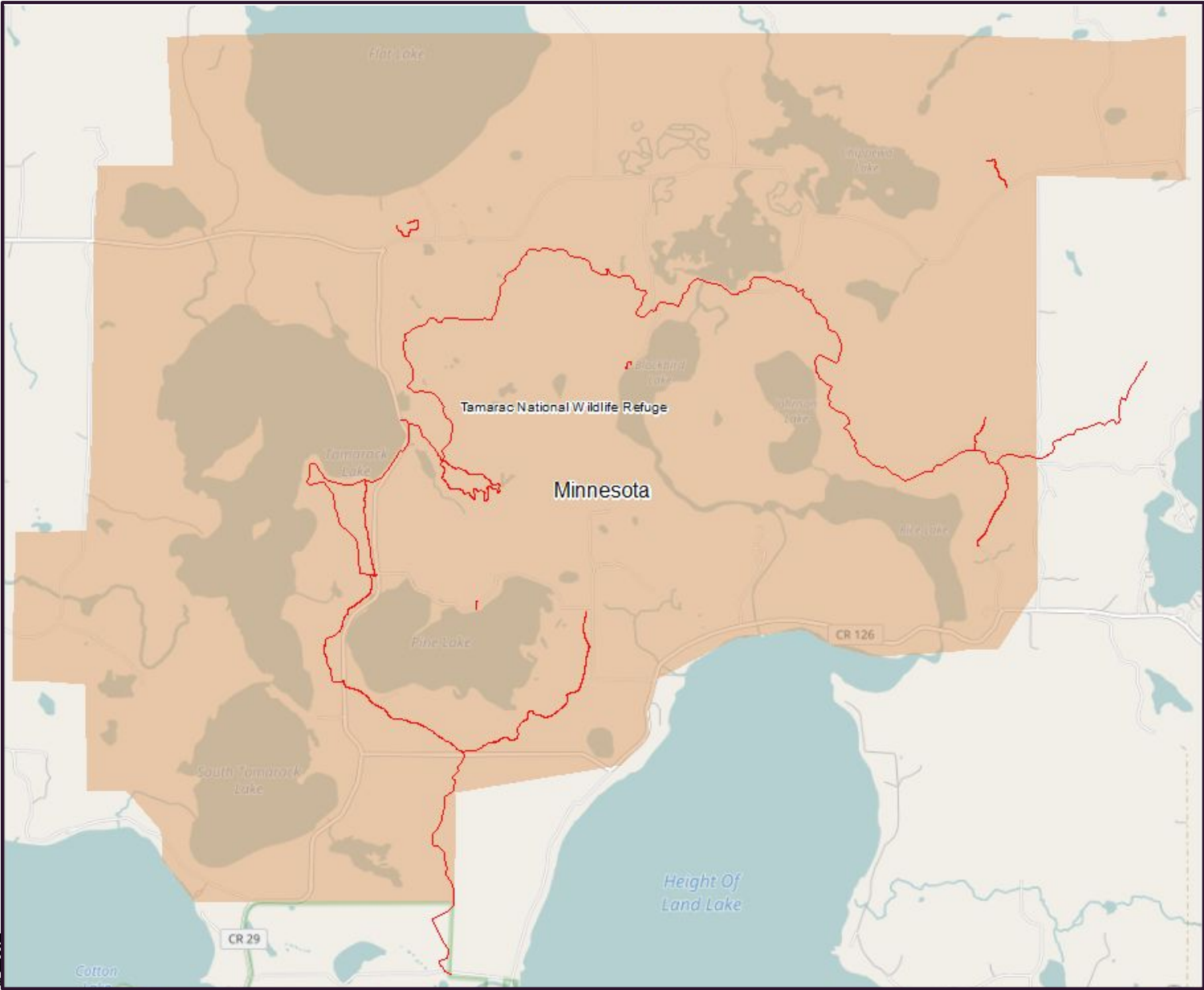
+ An Overview of Trail Collaboration Efforts

Fish and Wildlife Service

- FWS 1,858 mi.



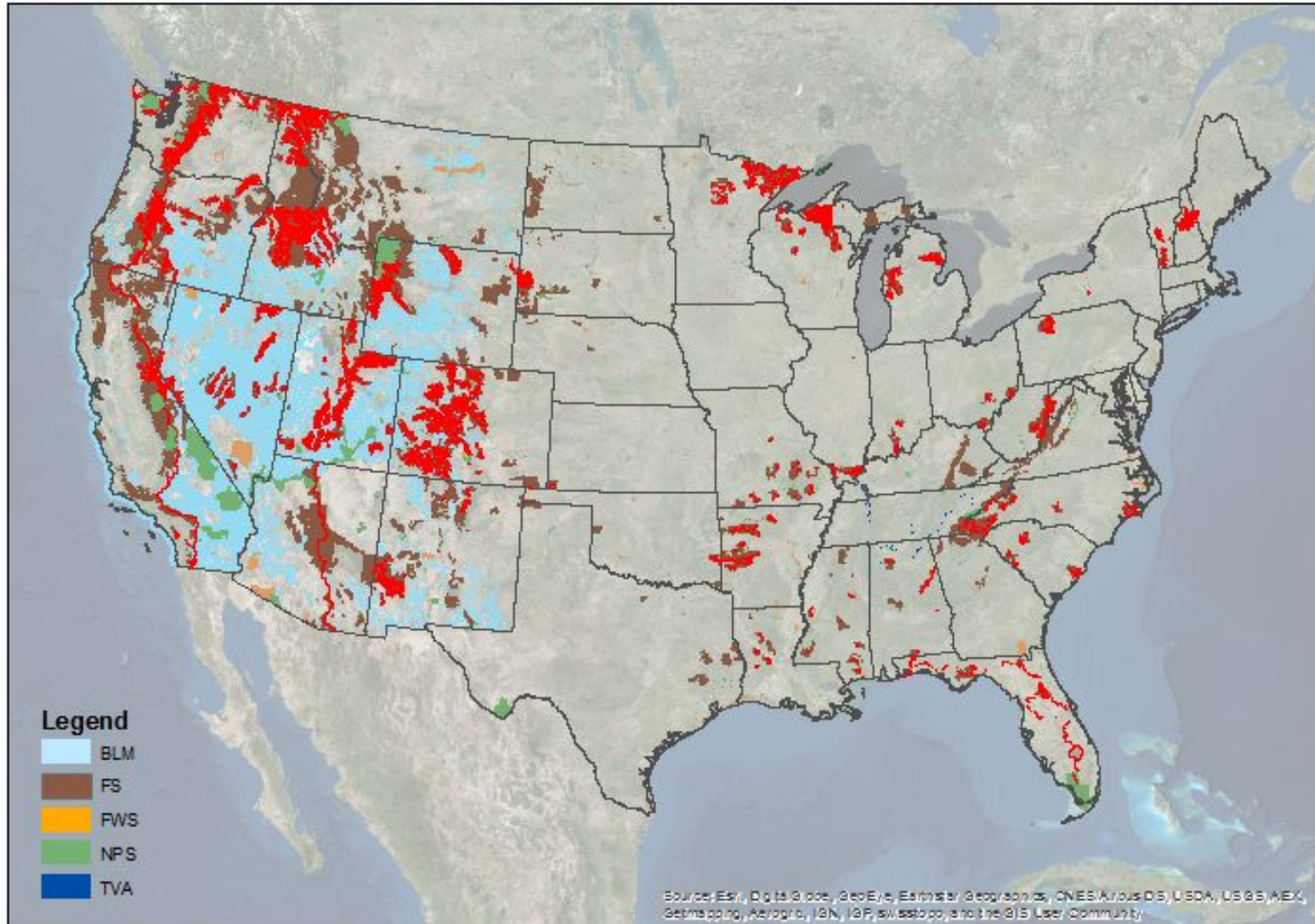
+ Tamarac National Wildlife Refuge



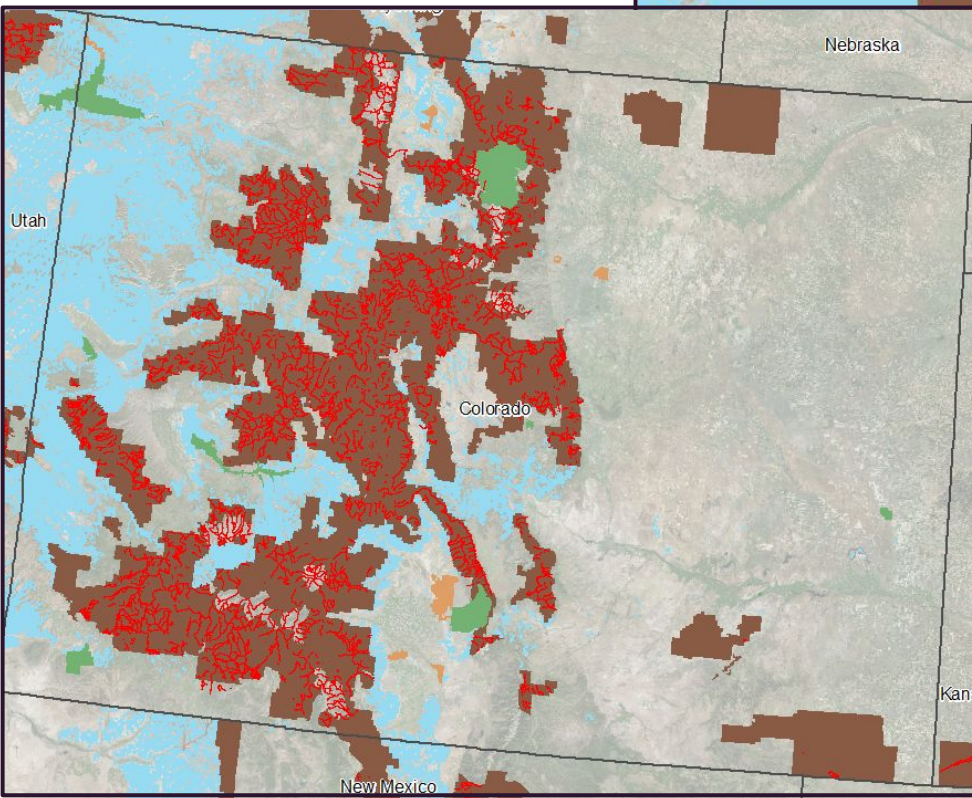
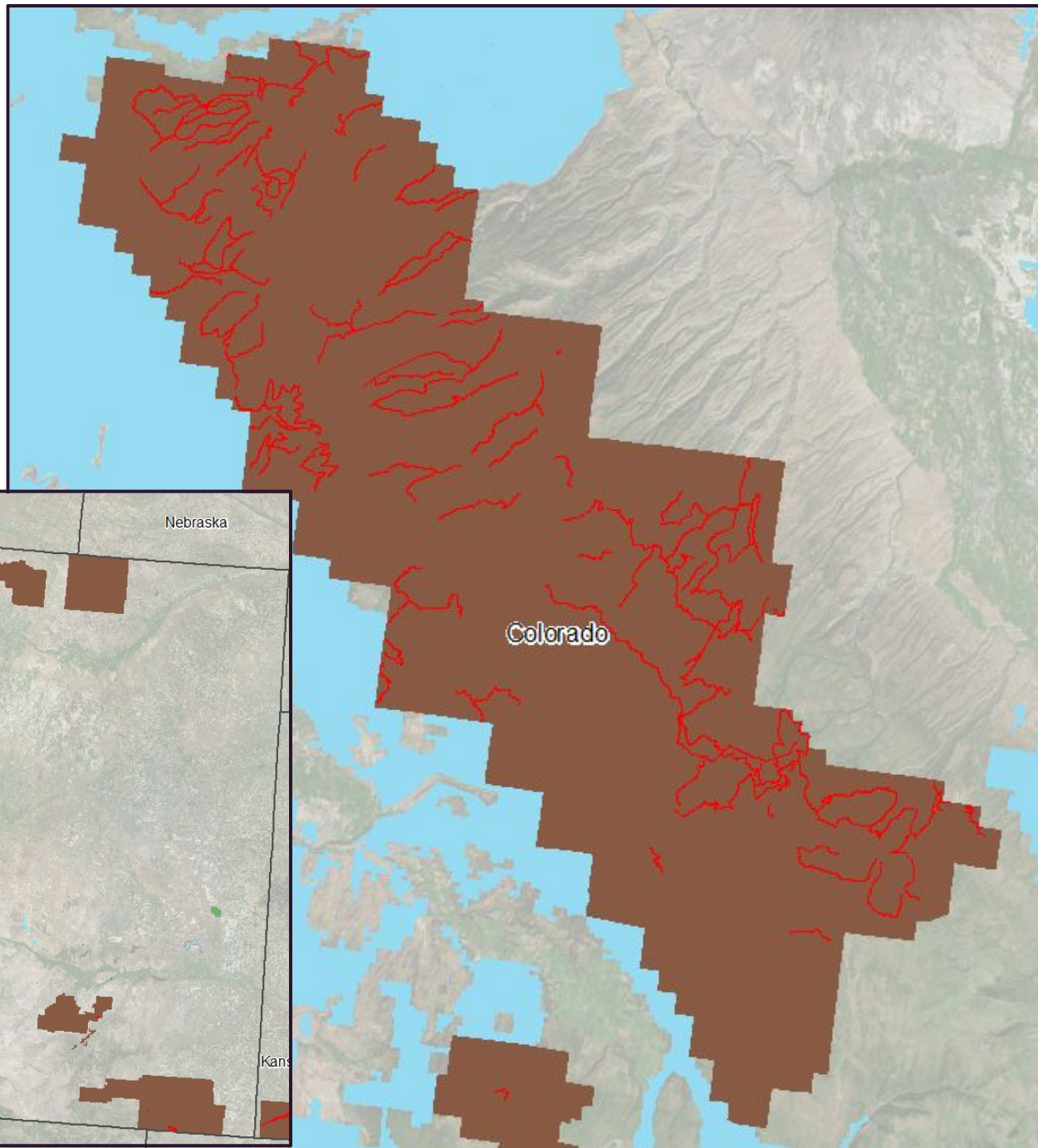
+ An Overview of Trail Collaboration Efforts

U.S. Forest Service

- USFS 77,548 mi



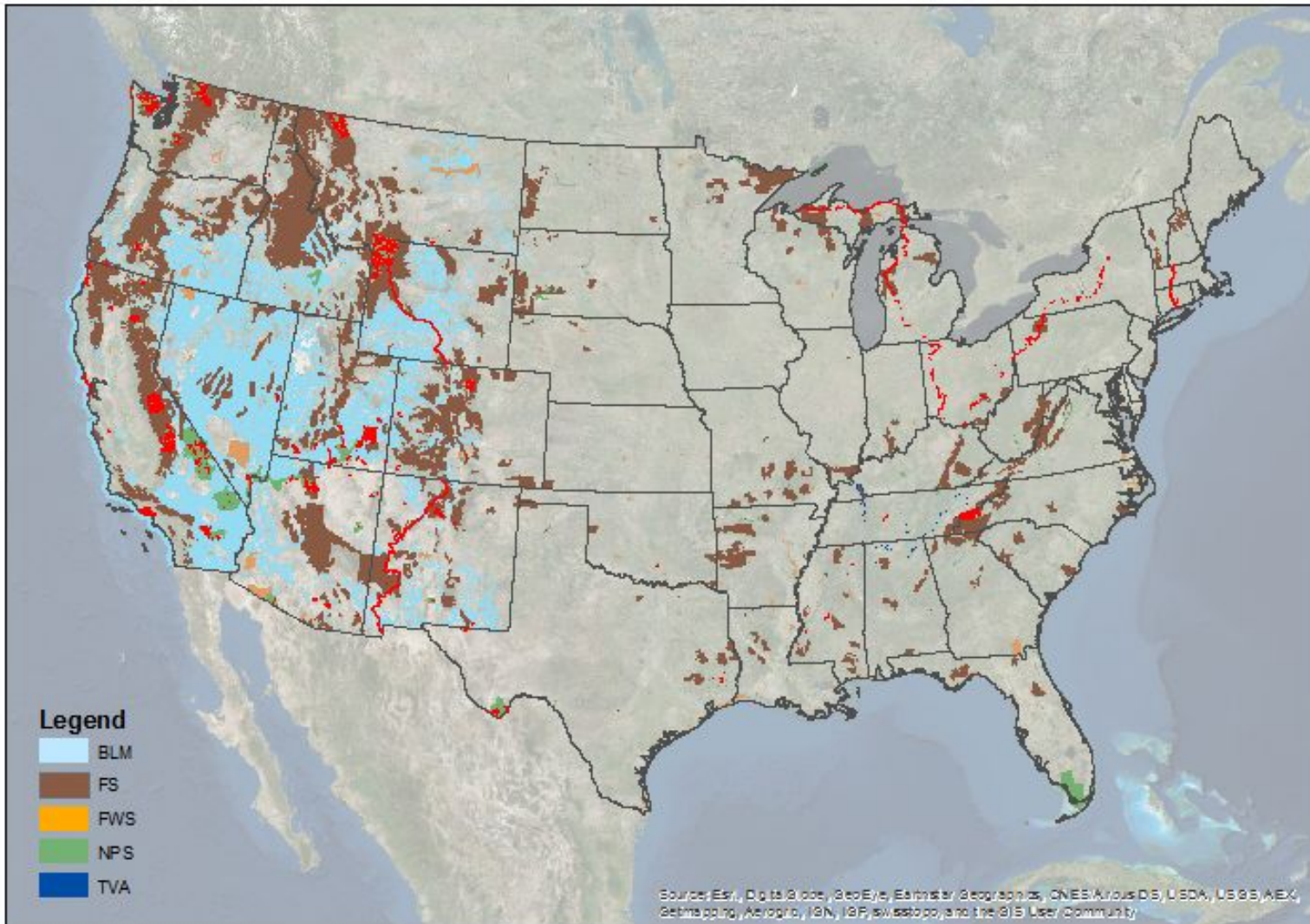
Uncompahgre National Forest



+ An Overview of Trail Collaboration Efforts

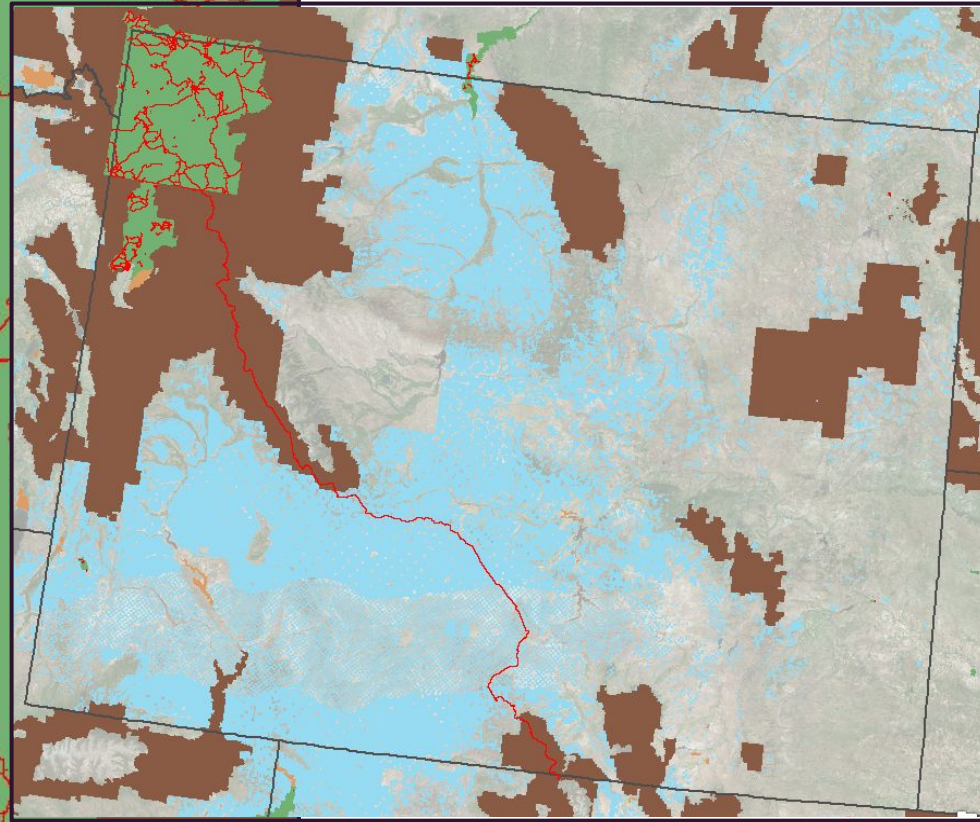
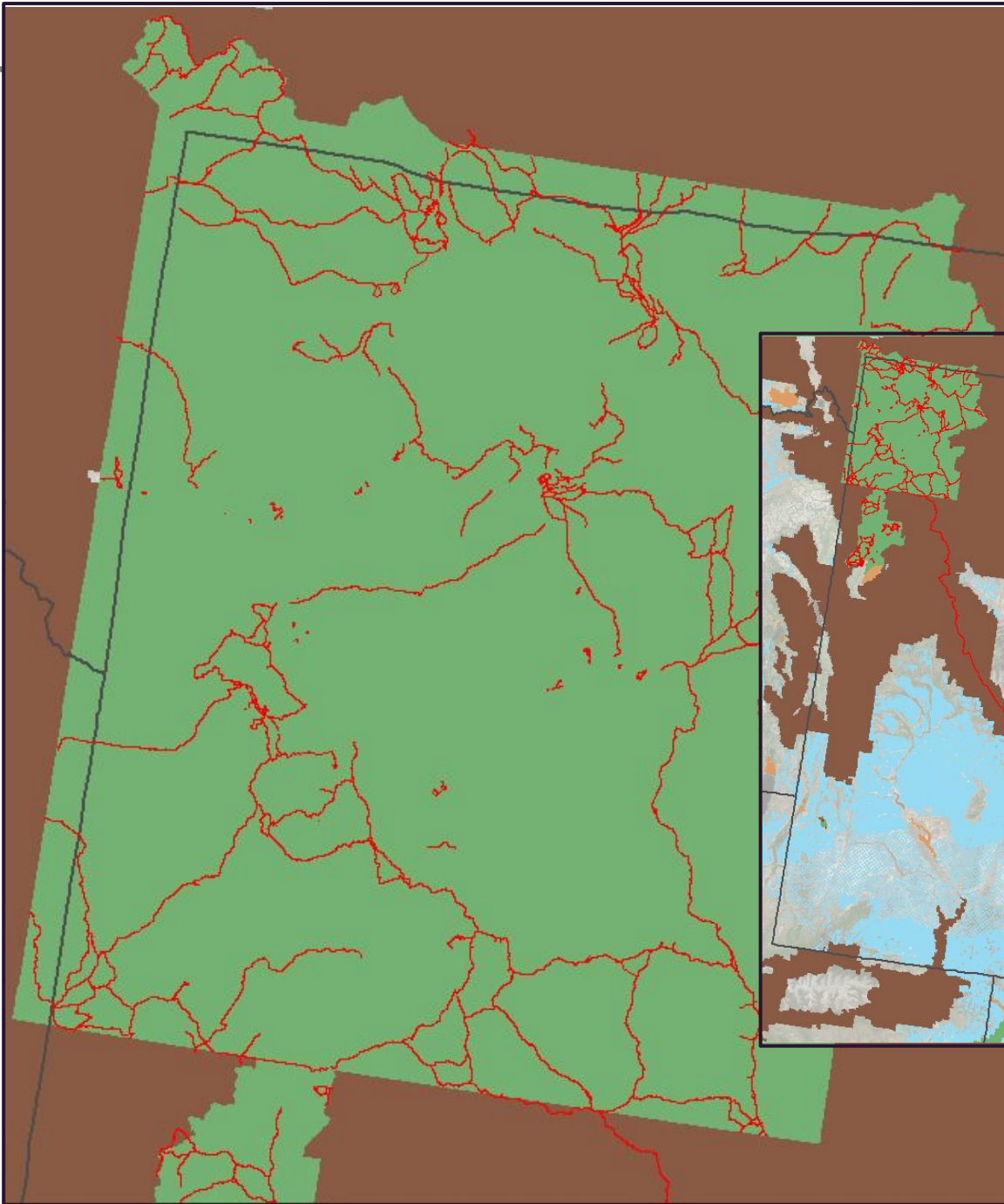
National Park Service

- NPS 14,923 mi



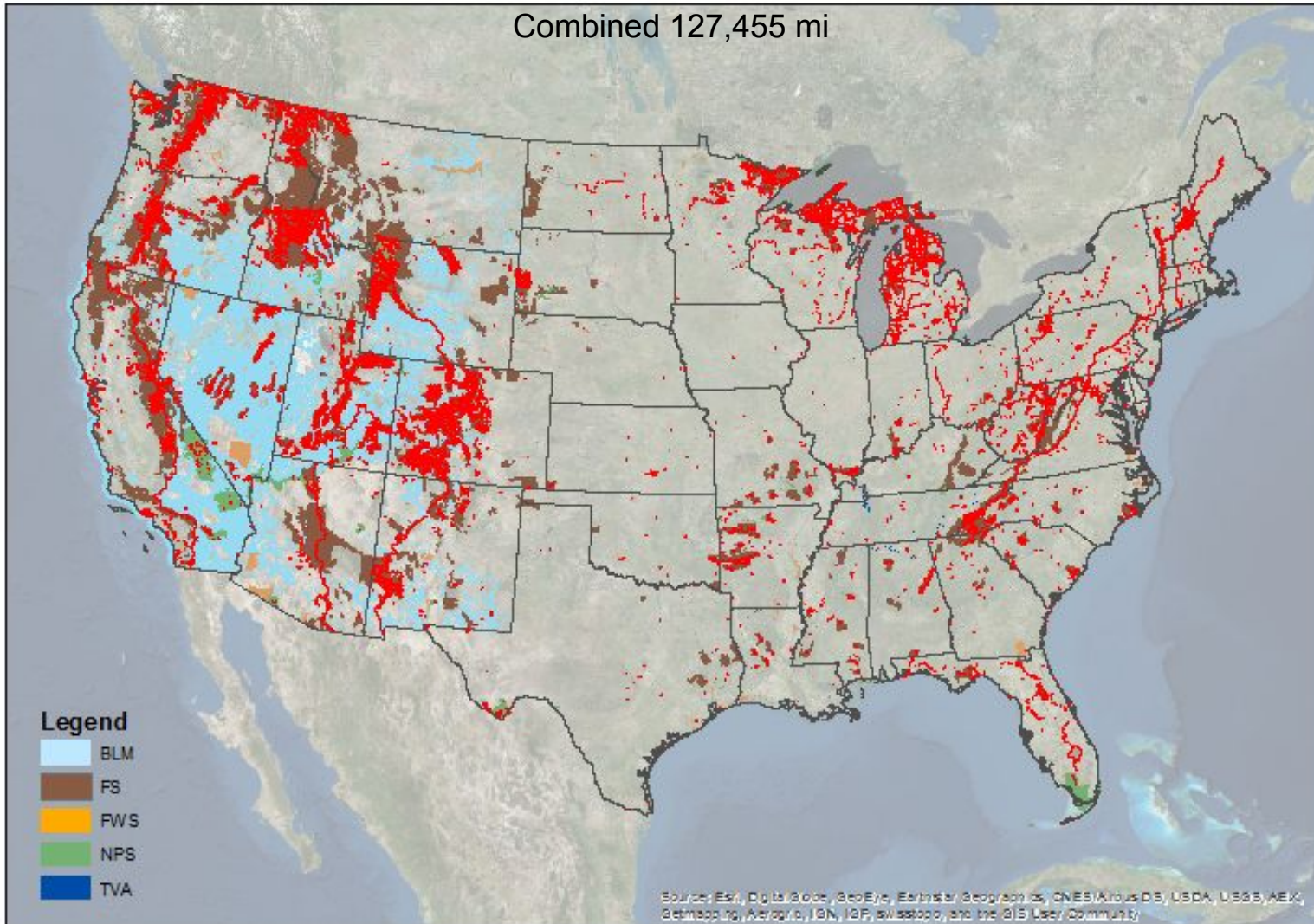
Yellowstone National Park

28



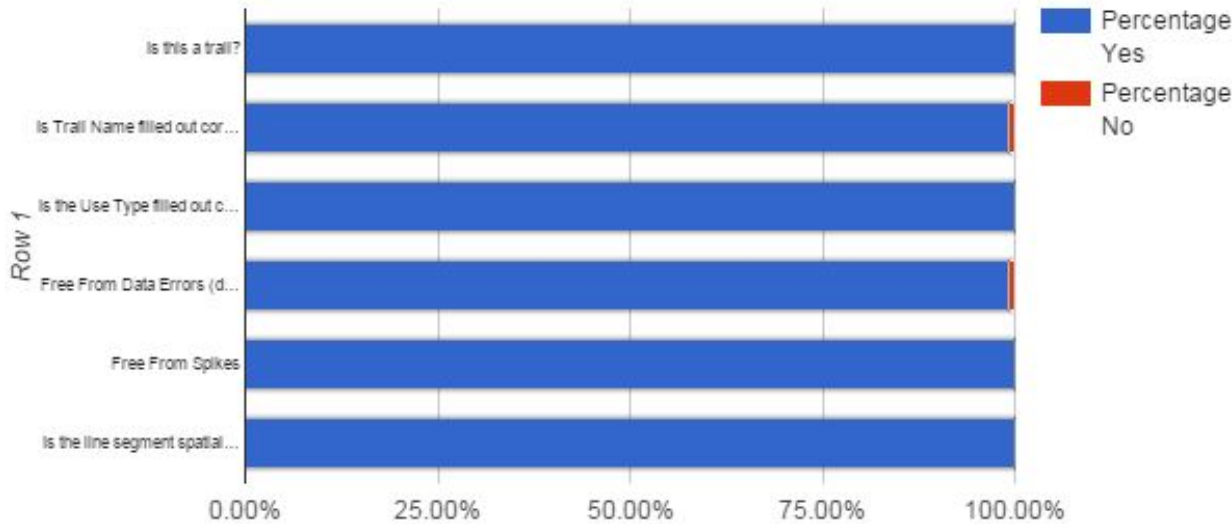
+ An Overview of Trail Collaboration Efforts

Combined Trail Sources



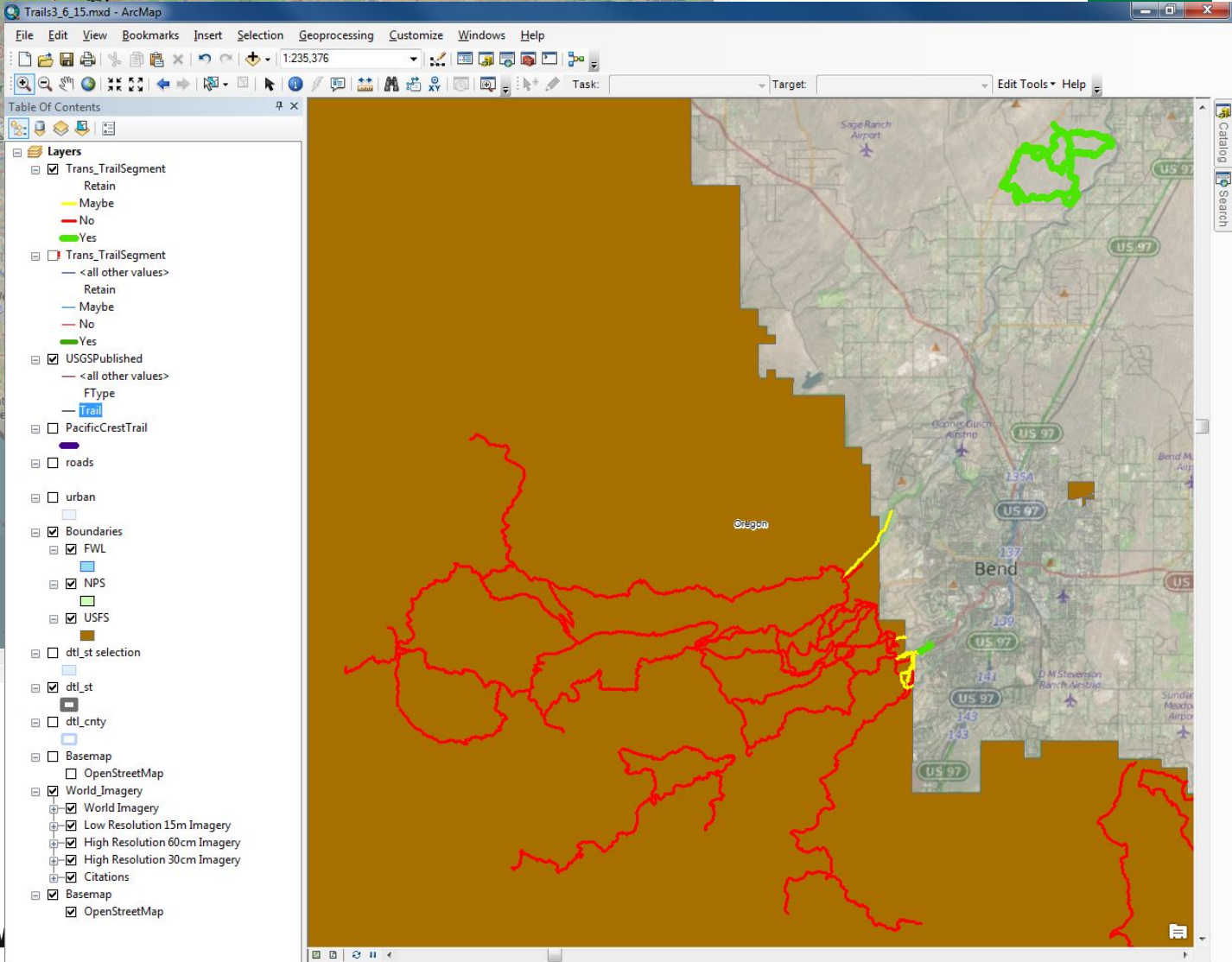
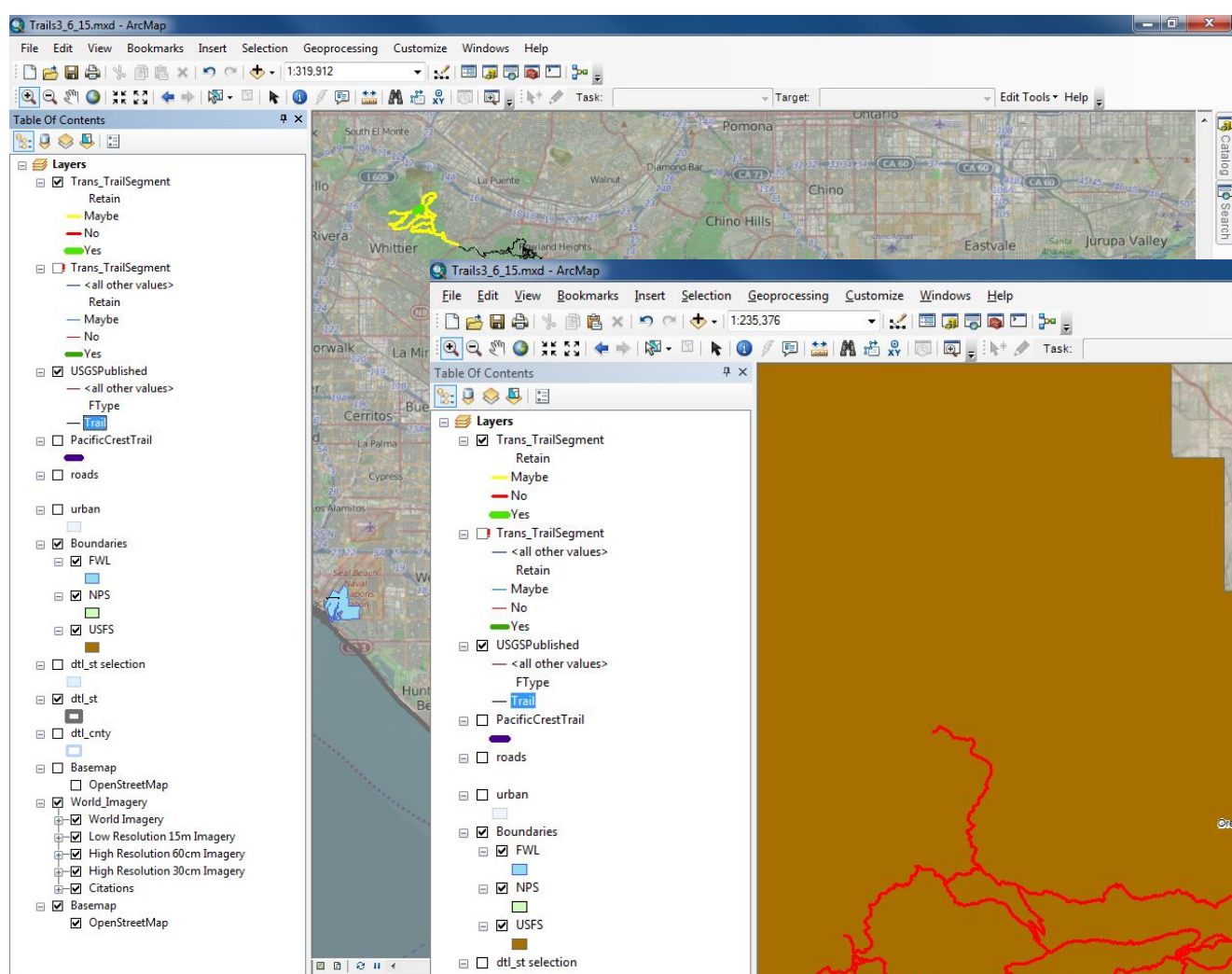
NPS Trails

Row 1/Percentage Yes/Percentage No



Horizontal axis title

	Is this a trail?	Is Trail Name filled out correctly?	Is the Use Type filled out correctly?	Free From Data Errors (duplicates, overshoot, undershoot)	Free From Spikes	Is the line segment spatially accurate?
Yes Count	126	125	126	125	126	126
No Count	0	1	0	1	0	0
Percentage Yes	100.00%	99.21%	100.00%	99.21%	100.00%	100.00%
Percentage No	0.00%	0.79%	0.00%	0.79%	0.00%	0.00%



+ USGS Products

Products

The following recreation POIs have been approved by the USGS, FS, NPS, BLM, & FWS and will be added to US Topo quads

- Trailheads
- Visitors Centers
- Campgrounds
- Shelters



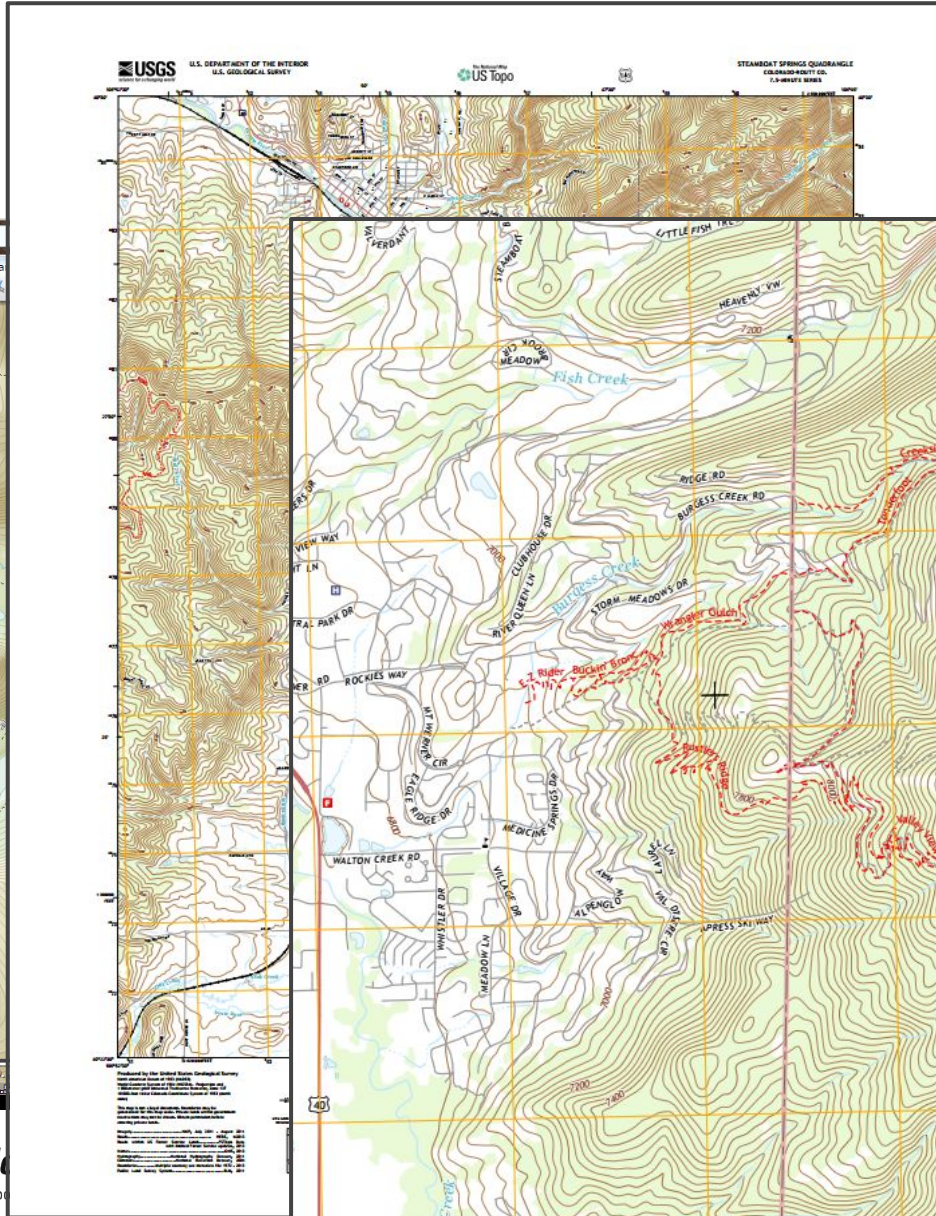
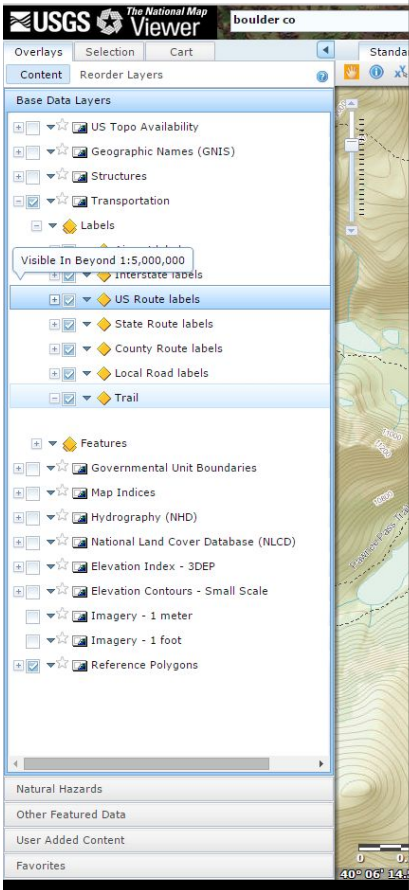
These POIs are in the process of being approved and acquired:

- Ranger Stations
- Park Headquarters
- Cabins
- Picnic Facilities



+ USGS Products

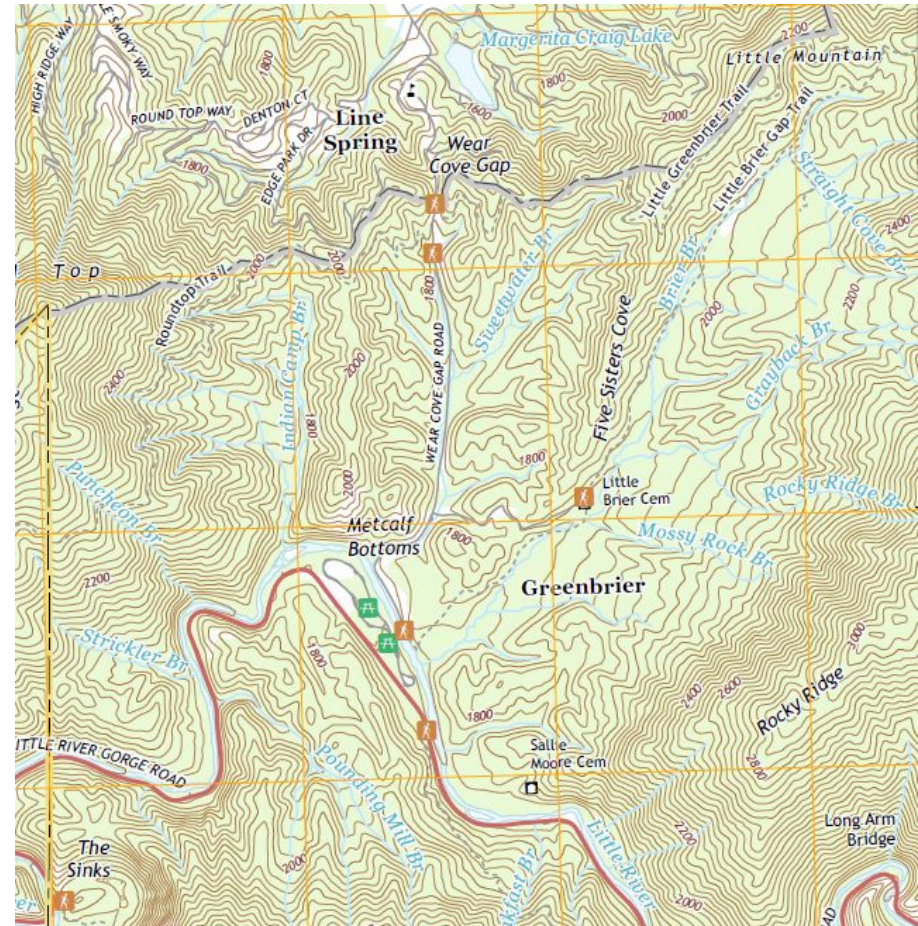
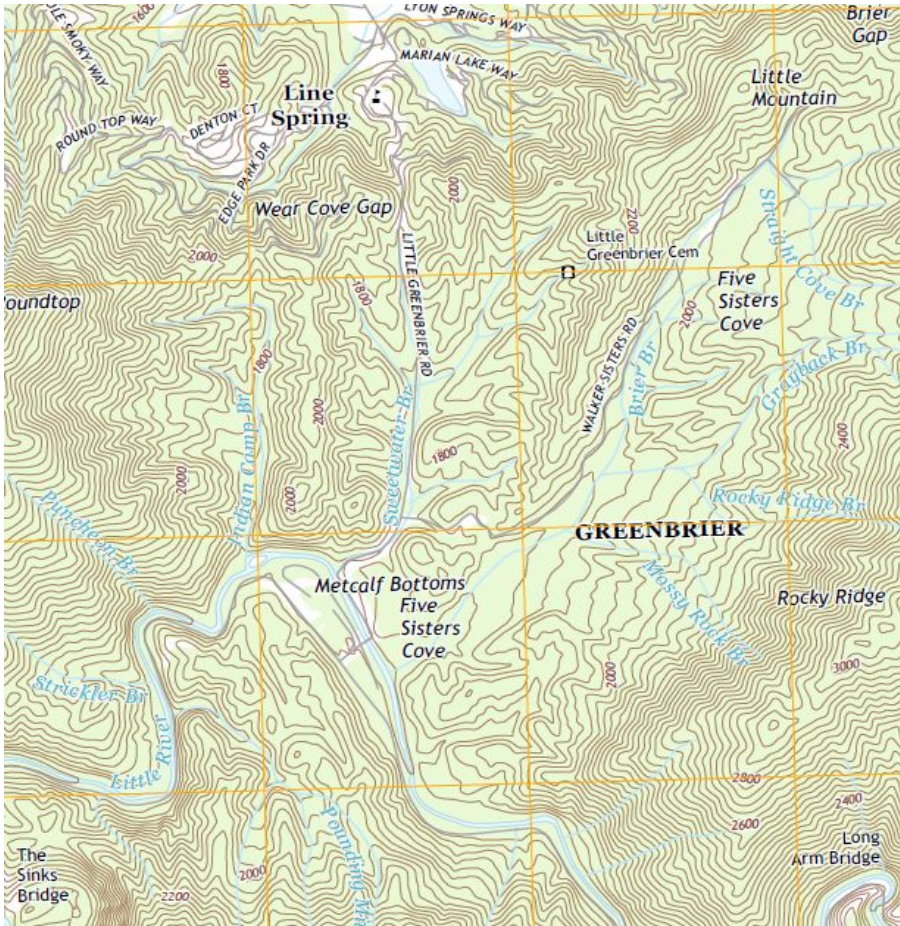
Products



+ USGS Products

Products

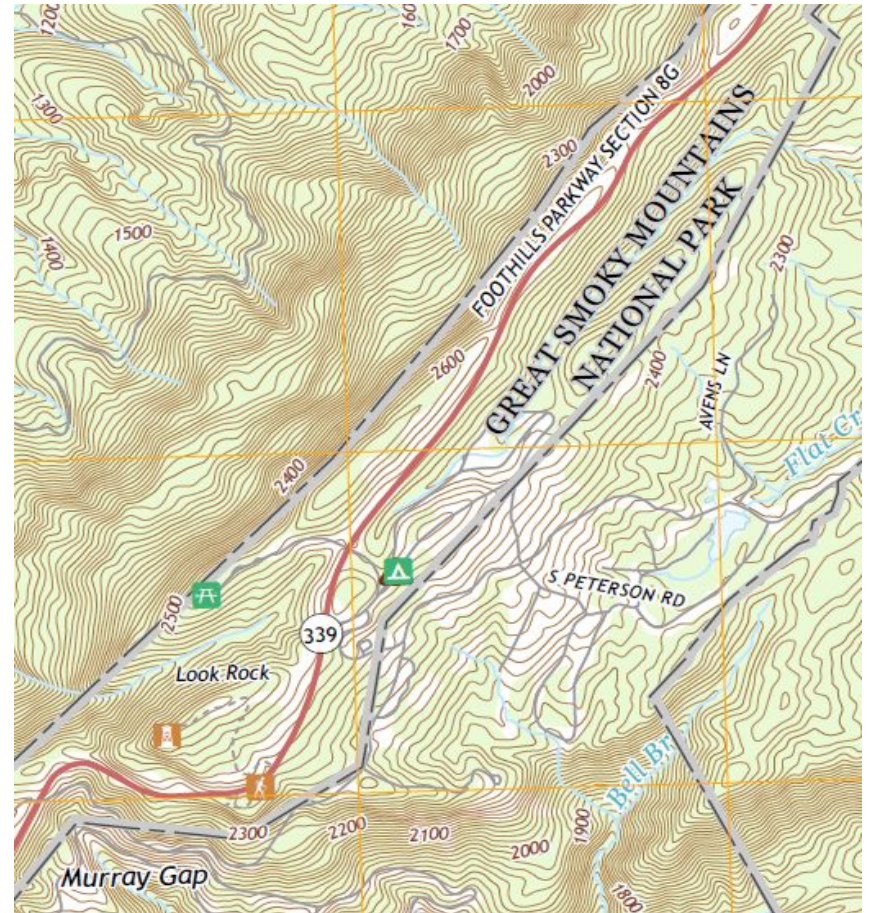
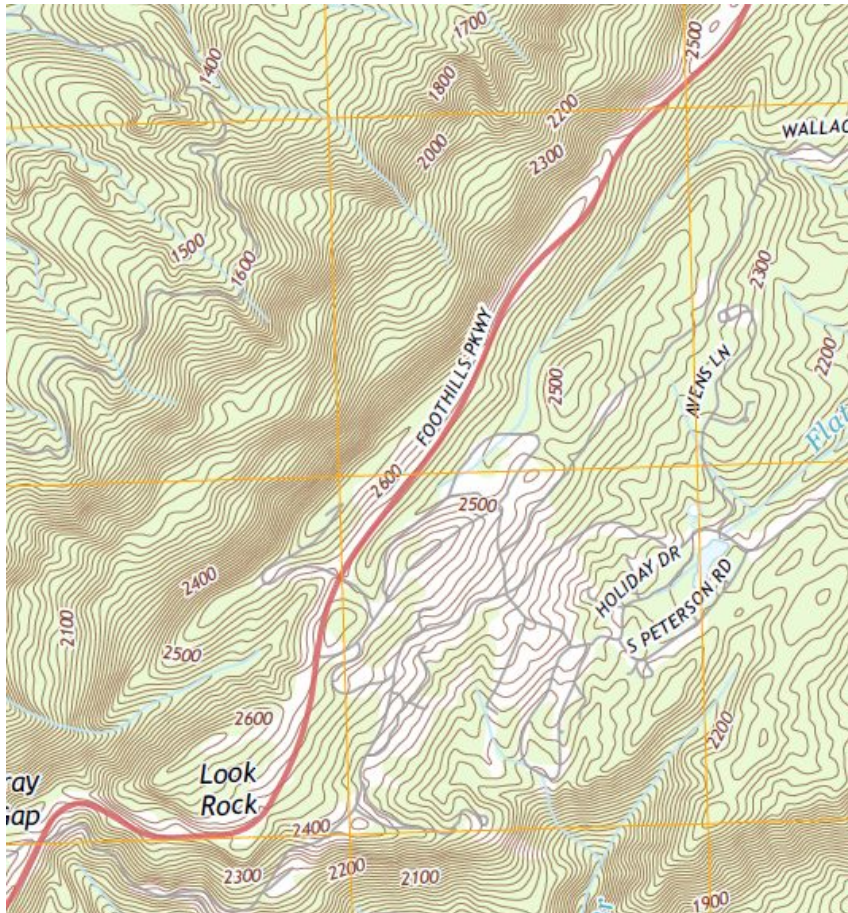
In the following comparison, you can see the addition of six trailhead symbols, two picnic areas, several new trail systems, and the Little River Gorge Road. The map looks much more complete thanks to the addition of the new National Park Service features.



+ USGS Products

Products

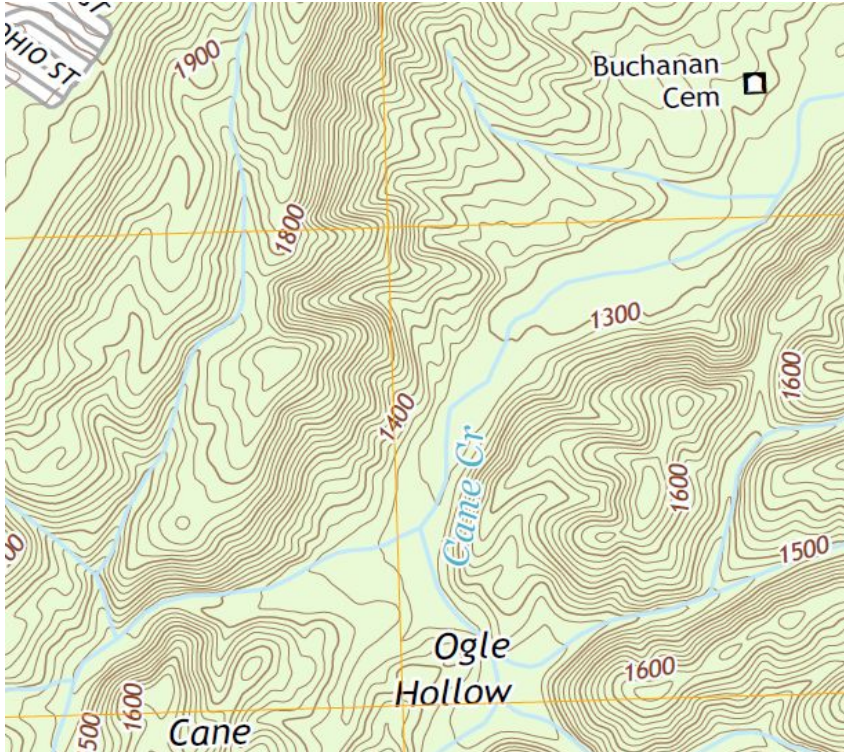
In the following comparison, you can see the addition of four recreational symbols, including a picnic area, campground, trailhead and observation tower. The Great Smoky Mountain National Park boundary is now bounding the Foothills Parkway road.



+ USGS Products

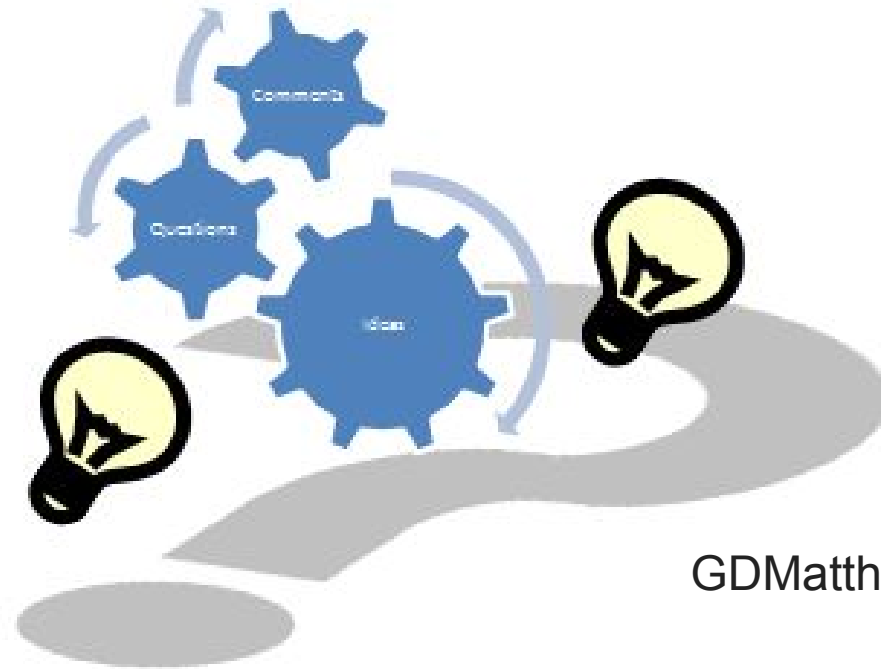
Products

In the following comparison, you can see the addition of a campground along the newly acquired Cane Creek Trail. Also, the park boundary is now present along with the new title of Great Smoky Mountains National Park.



+ The End

Questions / Comments / Ideas



Greg Matthews
GDMatthews@USGS.GOV