



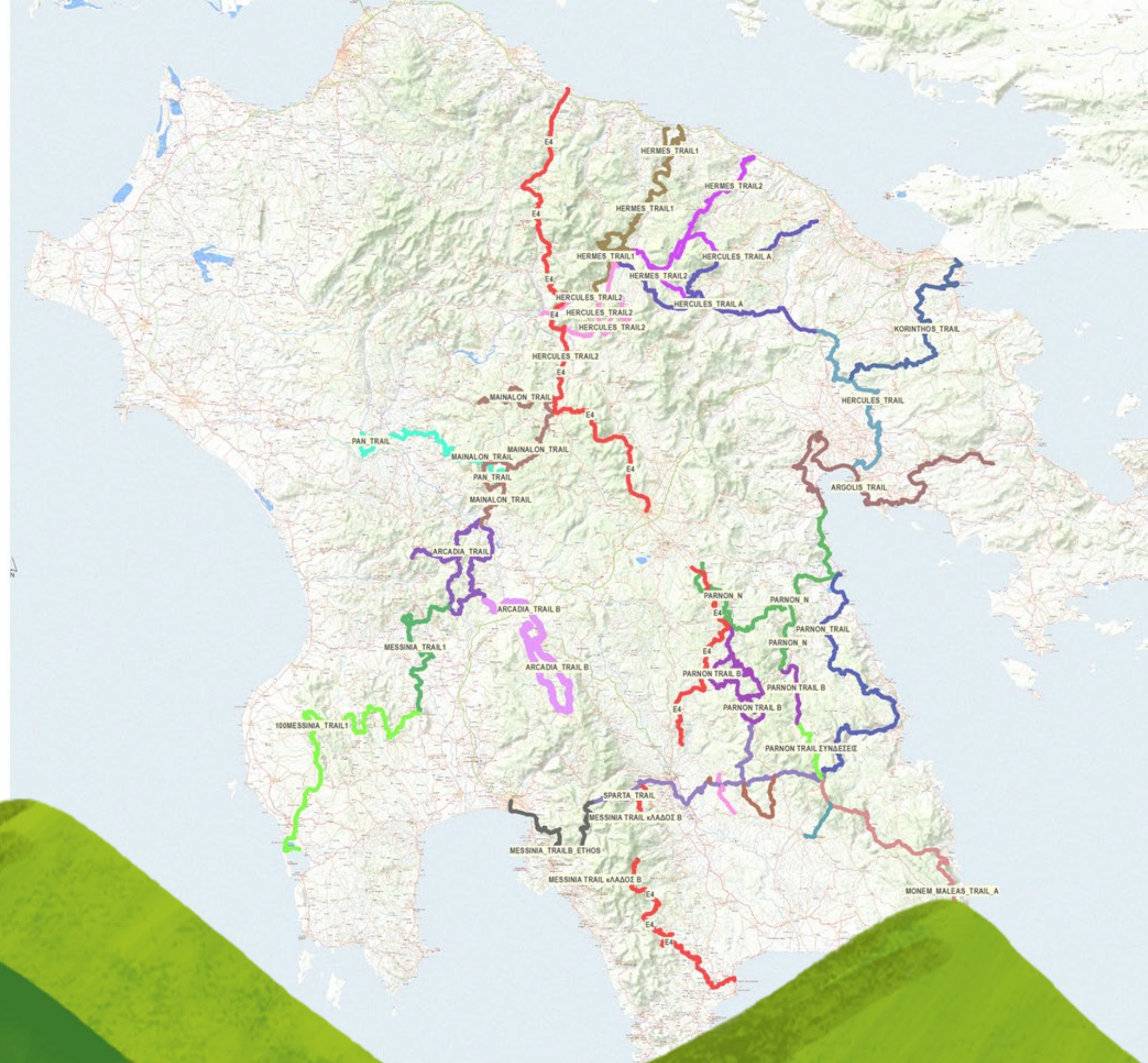
ANAVASI MAPS



Πάρνωνας α.ε.
Αναπτυξιακός Οργανισμός Ο.Τ.Α.

THE COLLABORATIVE PATH: MAPPING AND PROMOTING GREEK TRAILS

A CASE STUDY IN COMMUNITY-DRIVEN CARTOGRAPHY



PRESENTED BY
IVY ADAMAKOPOULOU
ANAVASI



ANAVASI: PIONEERING CARTOGRAPHY FOR THE PELOPONNESE TRAILS AND BEYOND

- Anavasi is an Established Leader in Outdoor Cartography
- Official Recognition and Expertise: Anavasi is the cartographic partner of the Hellenic Mountaineering Federation (EOOA) and a map provider for the Greek Fire Service
- Trusted by National and Local Authorities

IVY ADAMAKOPOULOU

CEO OF ANAVASI MAPS





ΕΘΝΙΚΟΣ ΔΡΥΜΟΣ ΟΛΥΜΠΟΥ

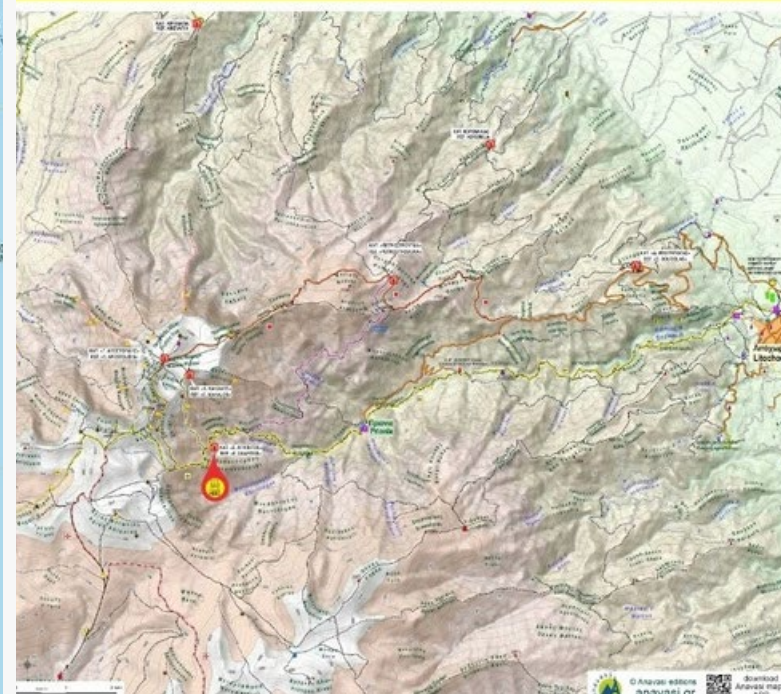


Μt OLYMPUS NATIONAL PARC

ΟΛΥΜΠΟΣ: ΕΥΡΩΠΑΙΚΟ ΜΟΝΟΠΑΤΙ
Mt OLYMPUS: EUROPEAN PATH



τμήμα ΠΡΙΟΝΙΑ - ΚΑΤΑΦΥΓΙΟ ΣΠΗΛΙΟΣ ΑΓΑΠΗΤΟΣ
section PRIONIA - SPILIOS AGAPITOS REFUGE





VISION AND MISSION

A well-mapped and accessible Peloponnese trail system driven by local participation, and to empower those local teams to create and maintain their local map, ensuring its quality and long-term sustainability.

- Anavasi ' mission is to promote Greek mountains and hiking. We create accurate trail mapping for hiking tourism, local communities, and environmental protection in Greece.

In this context,

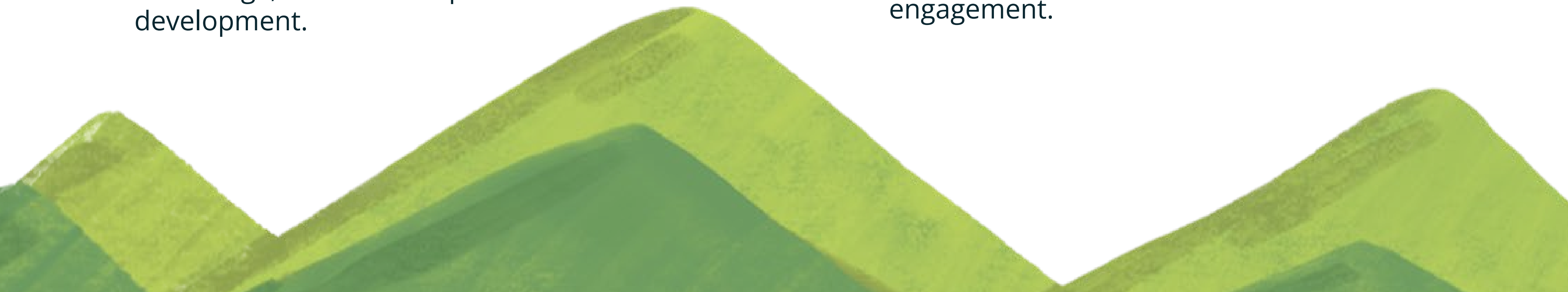
- Putting the power in local hands
- Building a very accurate and up-to-date map,
- Making this last and caring for the land



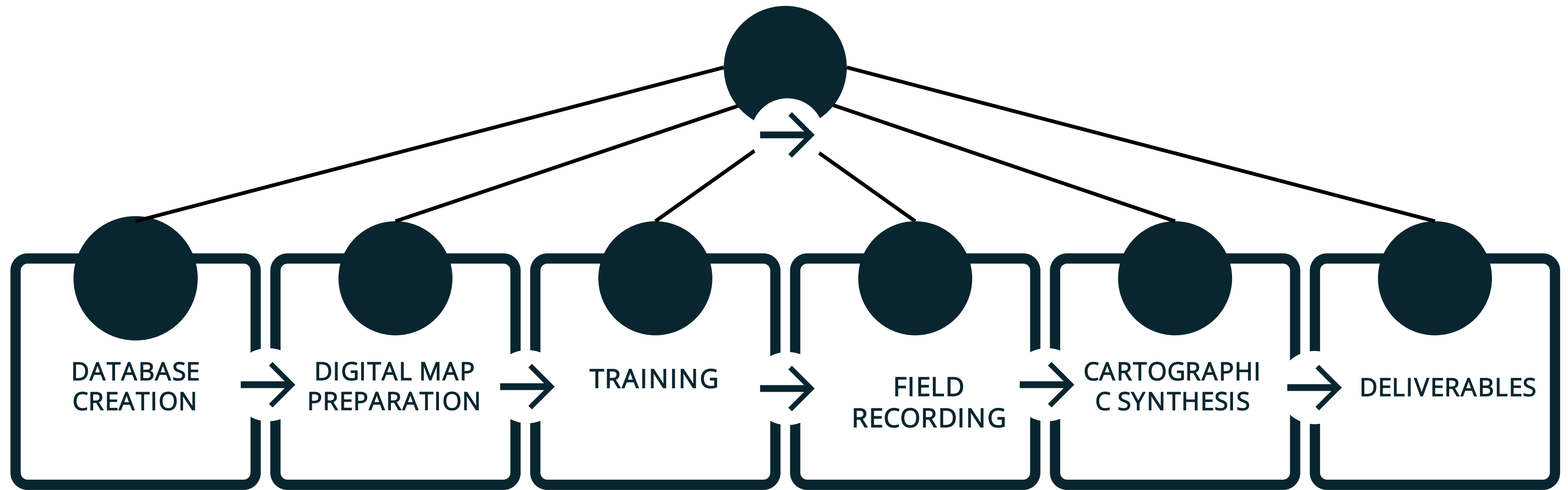


2. CONTEXT AND THEORETICAL FRAMEWORK

- The role of collaborative mapping in empowering local communities.
- Collaborative mapping can address issues of making unrecognized areas visible and enabling local communities to assert assets.
- explore the potential of collaborative mapping to enhance social cohesion, enhance local knowledge, and promote sustainable development.
- The concept of collaborative mapping, drawing on Gartner (2008), Sajja and Akerkar (2009).
- Collaborative Mapping, Volunteered Geographic Information (VGI) (Goodchild, 2007).
- The democratization of cartography (Butler, 2006) and the shift towards community engagement.



METHODOLOGY



Legend

ΠΟΛΙΤΙΣΤΙΚΟΣ ΤΣΙΝΤΖΙΝΑ

Σ.Ο.Κ.

— PARNON TRAIL B

PARNON TRAIL B
TZITZINA

A map showing the location of Balúra, marked with a red dot. A scale bar at the top indicates distances from 0 to 3 km. The map includes a blue line representing a river and various colored lines representing roads or boundaries.

Legend

100MESSINIA TRAIL1

— ARCADIA TRAIL

ARCADIA TRAIL B

— ARGOLIS TRAIL

E4

— HERCULES TRAIL

— HERCULES TRAIL A

— HERCULES TRAIL

— HERMES TRAIL1

— HERMES TRAIL2

KORINTHOS TRAINING

— MAINALON TRAIL

— MESSINIA_TRAIL1

— MESSINIA TRAIL2

— MESSINIA TRAILB E

— MONEMVASIA_TRAIL

— MONEMVASIA_TRAIL2

— MONEM MALEAS TRAIL A

— MONEM_M

— PAN_TRAIL

— PARNON TRAIL B

 PARNON TRAIL :

— PARNON N

— PARNON_TRAIL

— PARNON TRAIL P

— PARNON_WEST

— SPARTA_TRAIL

SPARTA_TRAIL_B

SPARTA_TRAIL_T

— TZITZINA

SPARTA TRAIL ΚΛΑΔΟΣ Β

Legend

ΚΟΙΝΣΕΠ ΓΙΑ ΤΟ
ΠΕΡΙΒΑΛΛΟΝ & ΤΟΝ ΠΟΛΙΤΙΣΜΟ

SPARTA TRAIL ΚΛΑΔΟΣ Α

Legend

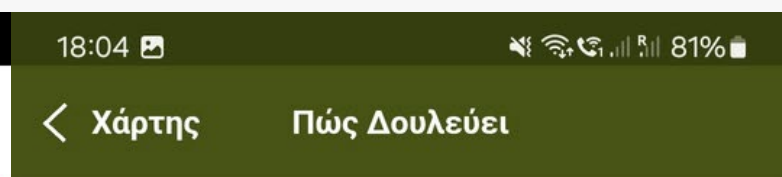
ΠΑΛΙΟΓΟΥΛΑΣ
ΣΕΡΑΦΙΑ
ΚΟΙΝΣΕΠ ΓΙΑ ΤΟ
ΠΕΡΙΒΑΛΛΟΝ & ΤΟΝ ΠΟΛΙΤΙΣΜΟ



3. COLLABORATIVE MAPPING AND COMMUNITY EMPOWERMENT

- Empowering Local Teams for Collaborative Mapping: The project equips local teams with a free app and maps, incentivizing them with payment to record their trail cleaning efforts, making them key contributors to the map's creation.
- Community-Driven and Locally Validated Maps
- This initiative combines technology with local expertise, offering a dynamic and sustainable method for both trail maintenance and the creation of detailed, locally validated trail maps of the Peloponnese.





1α. Διαδρομές / Επιλογή Διαδρομής & Εμφάνιση στο χάρτη



Κάνοντας tap πάνω στην επιλεγμένη διαδρομή εμφανίζεται το όνομά της μαζί με τα μετρητικά στοιχεία. Καθώς και δυνατότητα εμφάνισης των πληροφοριών της και πλοήγηση στην αρχή της.



ΕΘΝΙΚΟΣ ΔΡΥΜΟΣ ΟΛΥΜΠΟΥ
Μt OLYMPUS NATIONAL PARC

ΟΛΥΜΠΟΣ: ΕΥΡΩΠΑΙΚΟ ΜΟΝΟΠΑΤΙ
Mt OLYMPUS: EUROPEAN PATH

τμήμα ΠΡΙΟΝΙΑ - ΚΑΤΑΦΥΓΙΟ ΣΠΗΛΙΟΣ ΑΓΑΠΗΤΟΣ
section PRIONIA - SPILIOS AGAPITOS REFUGE

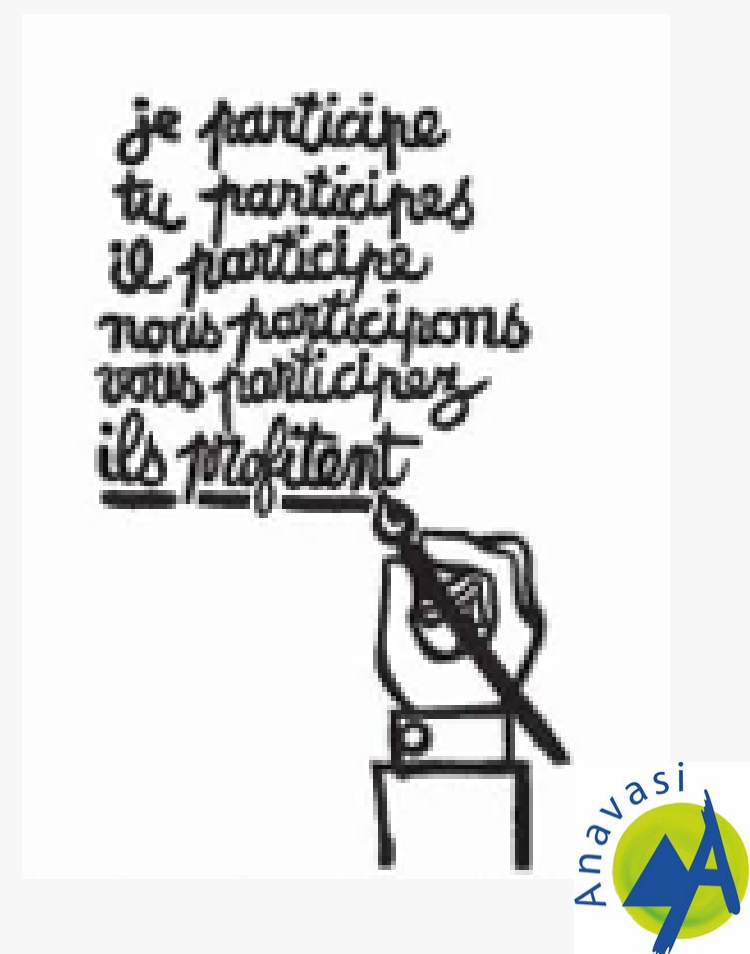
ΚΑΤΑΦΥΓΙΟ «ΣΠΗΛΙΟΣ ΑΓΑΠΗΤΟΣ»
REFUGE «SPILIOS AGAPITOS»
Βασιλειάδα, ΕΒΡΑ, Πελοπόννησος, υψ. 2020μ/6725', 21°52'N, 23°35'E
Διατ. ΕΘΝ. ΔΡΥΜΟΥ: 10. 2020/6725' 21°52'N, 23°35'E
www.olympus.gr

ΚΑΤΑΦΥΓΙΟ «ΓΙΟΣΣΟΣ ΑΠΟΣΤΟΛΙΔΗΣ»
REFUGE «YIOSSOS APOSTOLOIDIS»
Παράδεισος, ΕΒΡΑ, Πελοπόννησος, υψ. 2120μ/6955', 21°52'N, 23°35'E
Διατ. ΕΘΝ. ΔΡΥΜΟΥ: 10. 2120/6955' 21°52'N, 23°35'E
www.olympus.gr

ΚΑΤΑΦΥΓΙΟ «ΠΕΤΡΟΣΤΡΟΥΚΑ»
REFUGE «PETROSTROUKA»
Βασιλειάδα, ΕΒΡΑ, Πελοπόννησος, υψ. 2117μ/6948', 21°52'N, 23°35'E
Διατ. ΕΘΝ. ΔΡΥΜΟΥ: 10. 2117/6948' 21°52'N, 23°35'E
www.olympus.gr

ΚΑΤΑΦΥΓΙΟ «ΧΡΗΣΤΟΣ ΚΑΚΑΛΩΣ»
REFUGE «CHRISTOS KAKALOS»
Βασιλειάδα, ΕΒΡΑ, Πελοπόννησος, υψ. 2070μ/6790', 21°52'N, 23°35'E
Διατ. ΕΘΝ. ΔΡΥΜΟΥ: 10. 2070/6790' 21°52'N, 23°35'E
www.olympus.gr

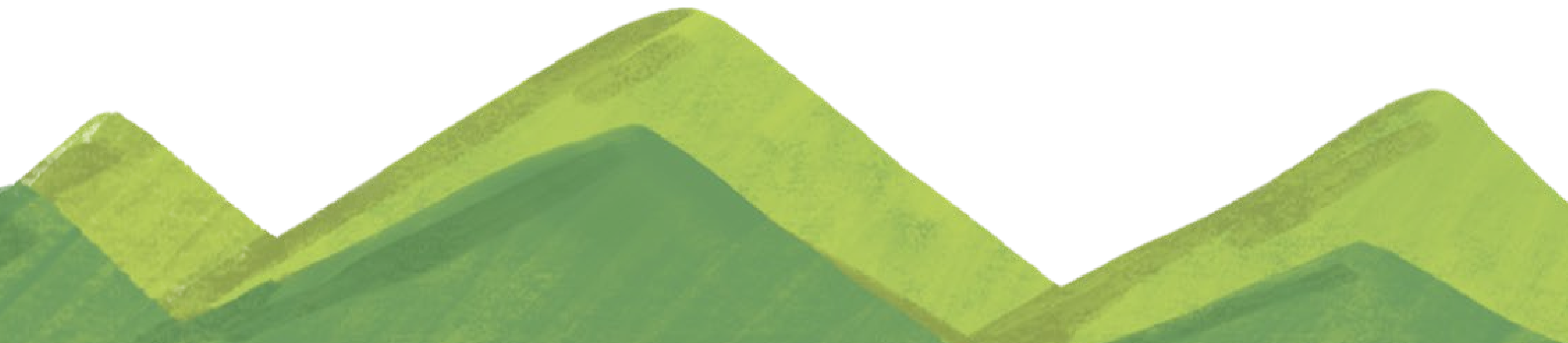
ΚΑΤΑΦΥΓΙΟ «ΔΗΜΗΤΡΙΟΣ ΜΟΥΤΙΤΣΙΔΗΣ»
REFUGE «DIMITRIOS MOUTITSIDIS»
Βασιλειάδα, ΕΒΡΑ, Πελοπόννησος, υψ. 2020μ/6725', 21°52'N, 23°35'E
Διατ. ΕΘΝ. ΔΡΥΜΟΥ: 10. 2020/6725' 21°52'N, 23°35'E
www.olympus.gr





4. DISCUSSION: CHALLENGES, LIMITATIONS, AND FUTURE DIRECTIONS

- Digital Divide and Data Quality
- Long-Term Sustainability?
- Geographic and Technological Expansion?
- Empowerment & Discovery
- This collaborative approach prompts a re-evaluation of traditional cartographic methods and highlights the value of citizen contributions for a richer understanding of *their* landscape.





CONCLUSION

- Mindful Integration of Diverse Perspectives: Future participatory trail mapping initiatives must carefully consider the various ways people understand and interact with the landscape.
- Transformative Potential of Collaborative Mapping: This case study demonstrates the transformative potential of collaborative mapping for understanding, documenting, and sustainably managing natural and cultural landscapes.





The Collaborative Path: Mapping and Promoting Greek Trails: A Case Study in Community -Driven Cartography



